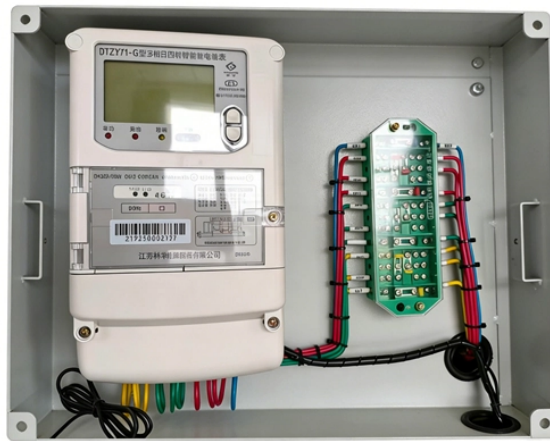


# Rack dimensions for communication equipment rooms



## Overview

Racks and frames are to be constructed of aluminum and black in color. Seven (7') foot high, nineteen (19") inch wide, and 29" deep rack space (for 4 post frame). Square mounting holes. This section includes the specifications for constructing and building out of Telecommunications Equipment Rooms (MDF/IDFs) to be used for supporting telecommunications and other special systems. Upon completion of the installation, a third party field verification firm will independently verify. BICSI: Building Industry Consulting Service International. Channel Cable Tray: A fabricated structure consisting of a one-piece, ventilated-bottom or solid-bottom channel not exceeding 6 inches in width. Proper sizing and layout are critical for functionality, maintenance, and scalability. Telecommunications mounting elements. If the usable OHIO FACILITIES CONSTRUCTION COMMISSION OHIO SCHOOL DESIGN MANUAL CHAPTER 09: SPECIFICATIONS COMMUNICATIONS EQUIPMENT ROOM FITTINGS 2024 27.

## Rack dimensions for communication equipment rooms



Each frame will have two L-shaped top angles, two L-shaped base angles, a top and bottom pan, and four C-shaped equipment-mounting channels (a front and rear pair). The rack will assemble with nut ...



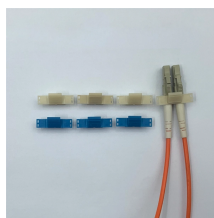
Proper planning of telecommunications spaces ensures not only code compliance and safety but also makes future expansions, equipment access, and thermal management easier. Whether you're ...



This section includes the specifications for constructing and building out of Telecommunications Equipment Rooms (MDF/IDFs) to be used for supporting telecommunications ...



The Communications Equipment room Facilities Standard establishes a series of guidelines for specifying this particular item on any construction project at the University.



The Telecommunication Rooms (TR) must be equipped with one (1) 19" aluminum relay rack which is anchored to the ground and supported from the wall with a 12" ladder tray.



Include construction details, material descriptions, dimensions of individual components and profiles, and finishes for equipment racks and cabinets. Include rated capacities, operating characteristics, ...



Standard telecom room dimensions are provided below. At a minimum the room dimensions must provide the following clearances: 0.75 m (2.5 ft) in front of, behind and on one side of the network ...



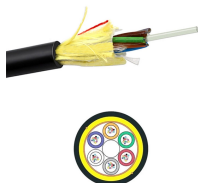
Proper planning of telecommunications spaces ensures not only code compliance and safety but also makes future expansions, equipment access, and thermal ...



CommScope offers a full line of equipment racks for your data center, central office or headend



Equipment Racks: Provide 19" wide x 7'-0" tall racks with number of vertical rack sections as required to allow space for all equipment, cabling and horizontal cable managers, plus space for future growth ...



This Section defines the general design requirements for a uniform Communications Room Infrastructure that shall be followed for all OFCC Technology construction projects.

## Contact Us

For more information, pricing, or custom data center solutions, please contact us:

Website: <https://yoahorroenergia.es>

Email: [hello@yoahorroenergia.es](mailto:hello@yoahorroenergia.es)

Phone: +233 54 318 7269

Address: Plot 28, Spintex Road, Accra, Greater Accra, Ghana

This document is for informational purposes only. Specifications subject to change without notice.

