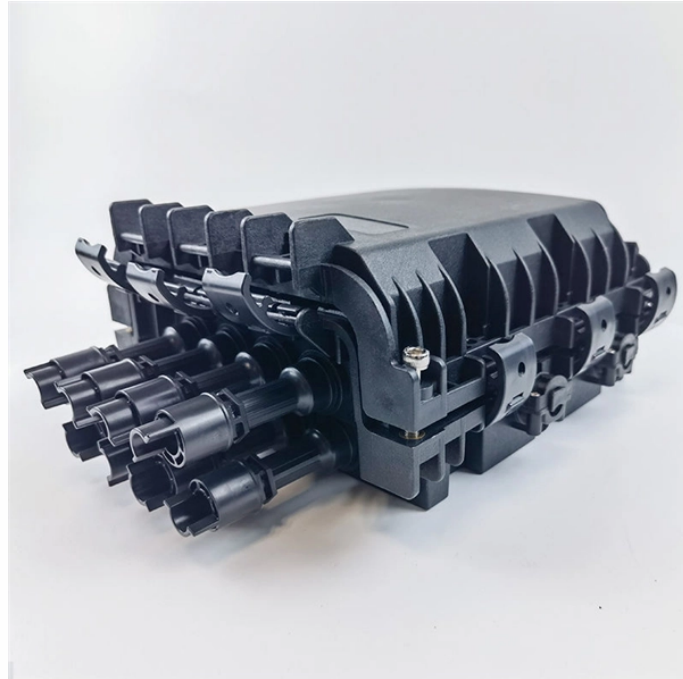


Requirements for installing network modules on patch panels



Overview

Learn the step-by-step network patch panel and keystone jack wiring methods, including essential tools, T568A/B wiring sequences, and tool-free installation tips. This guide covers everything you need for efficient network setups, from cable preparation to final. Our guide delivers actionable, step-by-step best practices for rack layout, cable management, and patch panel installation. Following these steps helps you build a clean and efficient structured cabling system that simplifies maintenance and maximizes network performance. Before a single cable is. When installed correctly, it improves network performance, simplifies troubleshooting, and supports future upgrades. The rack can be two-post type or four-post type rack. Stripped outer jacket of the Cat6 cable. Each module is connected to its own run of cable (two modules in one place; two cables. All cables terminate onto a patch panel at the common. In this section, we'll cover the key considerations for choosing the right patch panel, installing patch panels, and configuring them for optimal performance. Some of the key considerations include: Number of ports: Choose a patch.

Requirements for installing network modules on patch panels



This chapter contains tasks to install Cisco NCS 1000 Breakout Patch Panel and Cisco NCS 1000 Breakout Modules.



Install copper-based patch panels with a cable management ring run above and below every two horizontal rows of patch panel ports. The patch cord should not have to cross another bank of ...



Patch panels shall be configured with six port modules. The 110 termination on the rear of the panels shall follow normal installation color sequence (blue, orange, green, brown) from left to right. The ...



A step-by-step guide to structured cabling patch panel setup. Learn best practices to organize network cables in your data center for peak performance.



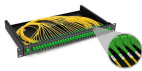
Learn the step-by-step network patch panel and keystone jack wiring methods, including essential tools, T568A/B wiring sequences, and tool-free installation tips.



All telecommunications cables, termination blocks and patch panels shall be installed and terminated by manufacturer certified technicians experienced in the installation and termination of ...



Learn the step-by-step network patch panel and keystone jack wiring methods, including essential tools, T568A/B wiring sequences, and tool-free installation tips.



In this comprehensive guide, we'll cover the benefits, installation, and maintenance of patch panels, providing you with the knowledge to optimize your network infrastructure.



All module connection points are interconnected; a telephone service connected on the rear IDC is available for connection to 4 locations using a patch cable and the RJ-45 ports available on the front ...



Step-by-step guide to building a reliable Ethernet patch panel system in server rooms. Follow TIA standards, avoid common mistakes, and ensure 10G performance.



Modules shall be mounted to the patch panel using Panduit Mini-Com mounting features for added strength. Patch panels shall be available with and without labels.

Contact Us

For more information, pricing, or custom data center solutions, please contact us:

Website: <https://yoahorroenergia.es>

Email: hello@yoahorroenergia.es

Phone: +233 54 318 7269

Address: Plot 28, Spintex Road, Accra, Greater Accra, Ghana

This document is for informational purposes only. Specifications subject to change without notice.

