

## Requirements for the height of the distribution box



Length:44mm

Small-end inner diameter:3.0mm

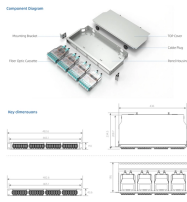
Large-end inner diameter:5.5mm



## Requirements for the height of the distribution box



The distance between the distribution box and the switch box should not exceed 30 meters, and the horizontal distance between the switch box and the fixed electrical equipment it controls should not ...



The latest NEC updates prioritize adaptive solutions for modern energy demands. With homes now packing solar arrays, EV chargers, and smart-home systems, distribution boxes work harder than ...



The best height for installing residential distribution boxes is 1.5 meters above the ground, while for industrial distribution boxes, the height ...



Install a distribution box at 4.5 to 5.5 feet high for safety, accessibility, and compliance. This height ensures easy use and protection from hazards.



The bottom of the board (box) installed on the ground should be 5-10 mm higher than the ground; the center height of the operating handle is generally 1.2-1.5 m; there are no obstacles in the ...



If the height of the electrical equipment is less than 6.5 feet, but when mounted, the top of the equipment exceeds 6.5 feet, the minimum workspace height shall be equal to the height of the equipment.



Choose the right box based on environment (indoor/outdoor), load capacity, and durability. Check for proper IP/NEMA ratings and material quality. Ensure safe placement: install in ...



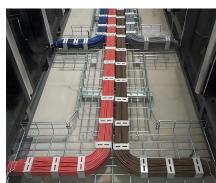
The distribution box shall be installed horizontally and vertically. After the box is placed, the perpendicularity of the box shall be found with ruler board to meet the requirements.



For the vertical clearance, often called headroom, the space must be clear from the floor up to a minimum height of 6 feet 7 inches (2.0 meters) or the height of the equipment, whichever is ...



The best height for installing residential distribution boxes is 1.5 meters above the ground, while for industrial distribution boxes, the height depends on the space and the equipment ...



While the National Electrical Code (NEC) doesn't specify a mandatory standard outlet height for most general-use receptacles, established industry best practices and accessibility laws provide clear ...

## Contact Us

For more information, pricing, or custom data center solutions, please contact us:

Website: <https://yoahorroenergia.es>

Email: [hello@yoahorroenergia.es](mailto:hello@yoahorroenergia.es)

Phone: +233 54 318 7269

Address: Plot 28, Spintex Road, Accra, Greater Accra, Ghana

This document is for informational purposes only. Specifications subject to change without notice.

