

## Schematic diagram of a concealed spectrometer



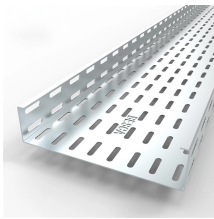
## Schematic diagram of a concealed spectrometer



Explore the components and structure of a spectrometer in this detailed diagram. Understand the parts and their functions for accurate measurements and analysis.



The spectrophotometer is an important common analytical equipment that measures the concentration of analytes via their absorbance of light at specific wavelengths.



Spectrometer line drawings illustrate the design and components of different types of spectrometers. View LightMachinery's spectrometer line drawings [here](#).



For those unfamiliar with the technology, learning about the schematic diagram of a spectrophotometer can be especially beneficial in understanding how they work and the variety of ...



A mass spectrometer produces a plot of the mass spectra of a chemical substance. The plot is defined by the mass-to-charge ( $m/e$ ) ratio vs the relative intensity or abundance of each substance. For ...



On the following pages are shown two common spectrometer geometries; the transmission grating based and the crossed Czerny-Turner. Also, the figures defines the key design parameters of a ...



Developed University of Utah College of Engineering and Granite School District

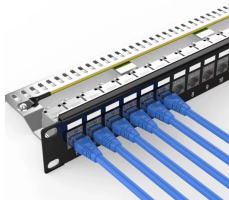
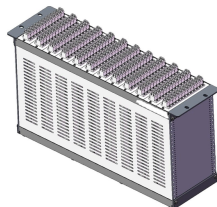


Figure 1 (a) Layout for circuit board for the photometer; and (b) trace for photo-etching the circuit board. The photometer consists of a light source (an LED), a light-dependent resistor (LDR) as ...



Pictured in Figure 8.4.1.2 is the schematic diagram for the Spec 20. The optical source in a Spec 20 is a tungsten halogen lamp the intensity of which is controlled by the Power/Zero Control in a manner ...



The basic difference between this mounting and the Littrow configuration is the presence of two optical elements (or two different regions of the same optical element) that are used both to ...

## Contact Us

For more information, pricing, or custom data center solutions, please contact us:

Website: <https://yoahorroenergia.es>

Email: [hello@yoahorroenergia.es](mailto:hello@yoahorroenergia.es)

Phone: +233 54 318 7269

Address: Plot 28, Spintex Road, Accra, Greater Accra, Ghana

This document is for informational purposes only. Specifications subject to change without notice.

