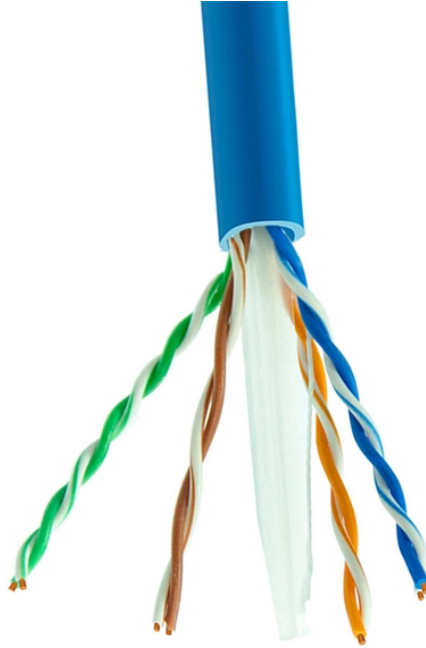


# Secondary beam splitter connected to secondary beam splitter



## Overview

A beam splitter or beamsplitter is an that splits a beam of into a transmitted and a reflected beam. It is a crucial part of many optical experimental and measurement systems, such as, also finding widespread application in.



## Secondary beam splitter connected to secondary beam splitter



These are rugged beamsplitters that are easy to mount and are ideal for beam superposition applications. This type of beamsplitter deforms much less when subjected to mechanical stress than ...



Another version of a distributed split architecture uses 1x2 splitters with unbalanced power outputs that then may connect to additional splitters. The power outputs are adjusted along the route.



A beam splitter or beamsplitter is an optical device that splits a beam of light into a transmitted and a reflected beam. It is a crucial part of many optical experimental and measurement systems, such as ...



A: Yes, with the correct adapters, a DSLR camera can be connected to a microscope via a beamsplitter. It's important to ensure you have the right T-mount and microscope-specific adapter to connect the ...



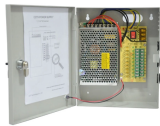
Beam splitters are devices for splitting a laser beam into two or more beams. There are different types, including polarizing and non-polarizing versions.



Overview Designs Phase shift Classical lossless beam splitter Use in experiments Quantum mechanical description Reflection beam splitters



The SPIE Digital Library offers a wide range of resources on beam splitters, focusing on their design, applications, and performance across various optical systems.



In addition to standardized, stocked separators, we primarily develop and produce unusual beam splitters, which are created, for example, by joining structured individual components. Our specialty ...



In addition to the task of dividing light, beamsplitters can be employed to recombine two separate light beams or images into a single path. This interactive tutorial explores transmission and reflection of a ...



In this guide, we'll explain how to safely connect a splitter to another splitter, covering both fiber optic and coaxial setups.



This article explains how to create a beam splitter cube in Sequential Mode. One of the biggest challenges for modeling such a system is that multiple ray paths cannot be simultaneously traced in ...

## Contact Us

For more information, pricing, or custom data center solutions, please contact us:

Website: <https://yoahorroenergia.es>

Email: [hello@yoahorroenergia.es](mailto:hello@yoahorroenergia.es)

Phone: +233 54 318 7269

Address: Plot 28, Spintex Road, Accra, Greater Accra, Ghana

This document is for informational purposes only. Specifications subject to change without notice.

