

Shared switch at aggregation layer



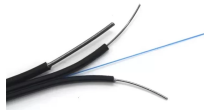
Overview

Each aggregation switch is physically connected to all edge switches and participates in multiple EAPS domains. The three layers of a traditional three-layer network design are the core layer, aggregation layer, and access layer. The content of this chapter focuses on the aggregation layer design with the Cisco. Knowing the roles of core, aggregation, and access switches in contemporary network topology becomes essential to create effective and scalable networks. It is essential for larger networks requiring efficient data flow.

Shared switch at aggregation layer



An "Aggregation Router" is a device located in the services aggregation layer of a data center LAN that integrates important network services such as firewalls and server load balancers, allowing them to ...



Discover the role of aggregation switches. Explore differences between aggregation, access, and core switches, and choose the right model for your network.



This chapter covers the design recommendations for a data center design deployment consisting of a Cisco Nexus® 7000 Series Switch at the aggregation layer and a Cisco Nexus 5000 Series Switch at ...



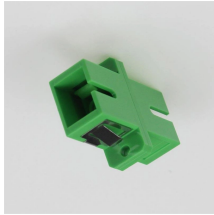
What is the difference between an aggregate switch and a core switch? An aggregate switch consolidates traffic from access switches, while a core switch forms the backbone of the ...



Selecting between core, aggregation, and access switches is not only technical — it's strategic. Once you know what your network needs, choosing the right type of switch will optimize ...



Each aggregation switch is physically connected to all edge switches and participates in multiple EAPS domains. The aggregation switches can serve a different role within each EAPS domain, with one ...



Because the aggregation layer switch is the aggregation point of multiple access layer switches, it must be able to handle all the traffic from the access layer devices and provide uplinks to the core layer.



This model allows the aggregation switches to easily accommodate thousands of devices passing through this layer while simplifying the design, maintenance, and operations. The following figure ...



Switch aggregation refers to the concept of consolidating multiple access layer switches into a single aggregation layer switch in a traditional three-tier network design.



A: An access switch is typically located at the edge of the network and connects end-user devices, while an aggregation switch is situated in the middle of the network architecture and ...

Contact Us

For more information, pricing, or custom data center solutions, please contact us:

Website: <https://yoahorroenergia.es>

Email: hello@yoahorroenergia.es

Phone: +233 54 318 7269

Address: Plot 28, Spintex Road, Accra, Greater Accra, Ghana

This document is for informational purposes only. Specifications subject to change without notice.

