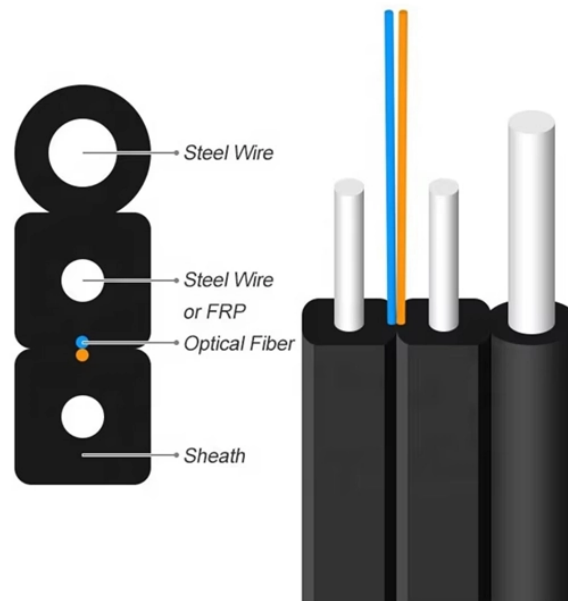


# Should the cable trays in the workshop be covered



## Overview

The use and installation of cable trays is covered by legally enforceable OSHA regulations in 29 CFR 1910. In addition, this document contains several references to provisions of the National Electric Code. Cable trays are structural components of a facility's electrical system, and as such, are part of a planned cable management system. In this guide, we will walk through the different considerations that should guide your cable tray cover choosing process, and how. Proper planning for installing cable tray includes calculations based on loading, support systems, cable/wire fill and spacing, conductor types, securing of the cables and wire, and proper grounding and bonding are all important aspects of cable tray installation. Here is the summary of the main points found in NEC Article.

## Should the cable trays in the workshop be covered



This is because the cover can trap heat and prevent it from dissipating, which can cause the temperature inside the cable tray to rise. To avoid ...



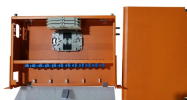
First, if the cable tray is installed outdoors, the protective shield must be installed on the top or every layer. Second, if the installation site is susceptible to mechanical damage or a lot of dust ...



A generic guideline developed by the Cable Tray Institute indicates that cable trays should not be filled in excess of 40-50% of the inside area of the tray or of the tray's maximum weight based on the cable ...



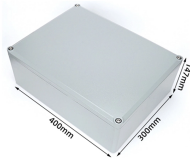
The document outlines safety procedures for installing wire ways and cable trays, emphasizing compliance with OSHA regulations to ensure a safe working ...



Cable trays are used not just in industrial establishments. Cable trays are permitted for use in any type of building or structure, provided they comply with the relevant installation and ...



In-depth guide to cable trays, focusing on NEC Article 392. Covers types, selection, installation, and safety standards for electrical systems.



In this guide, we will walk through the different considerations that should guide your cable tray cover choosing process, and how to optimize it for maximum functionality, protection, and ...



The use and installation of cable trays are covered by OSHA in 29 CFR 1910.305(a)(3) and within various provisions of the National Electric Code (NEC). When properly planned, installed, and ...



Once the cable is installed in an open cable tray installation, take care to protect the exposed cables from falling objects or debris that could cause damage to the cable. In areas where the cable tray ...



This guide covers the critical steps, from selecting the right electrical cable tray and performing accurate cable fill calculations to managing a safe cable pull through and ensuring all bonding and grounding ...



Easy to install and maintain, trays offer a reliable solution for routing cables in industrial, commercial, and utility environments. Understanding the various types, materials, and maintenance requirements ...



Cable trays must remain in open, accessible areas to allow for proper maintenance. They should never be permanently enclosed, and if they pass through walls or partitions, proper fire ...

## Contact Us

For more information, pricing, or custom data center solutions, please contact us:

Website: <https://yoahorroenergia.es>

Email: [hello@yoahorroenergia.es](mailto:hello@yoahorroenergia.es)

Phone: +233 54 318 7269

Address: Plot 28, Spintex Road, Accra, Greater Accra, Ghana

This document is for informational purposes only. Specifications subject to change without notice.

