

# **Single-mode fiber optic cable in pipelines**



## Single-mode fiber optic cable in pipelines



Single mode fiber optic cable is made up of a small diameter glass or plastic core surrounded by cladding, which is a layer of ...



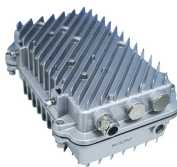
This comprehensive guide explores Single-Mode Fiber Optic Cable, covering technical specifications, deployment scenarios, and best practices to help you optimize your fiber infrastructure ...



Explore the essential specifications of single-mode fiber optic cables, including core size, attenuation rates, bandwidth capabilities, and standard classifications like OS1 and OS2. Understand ...



Single mode fiber optic cable is made up of a small diameter glass or plastic core surrounded by cladding, which is a layer of reflective material. This small diameter core, typically around 9 microns ...



For use in the mid-IR spectral range, we offer single mode and multimode fluoride optical fiber manufactured in-house, as well as patch cables and other components incorporating our fluoride ...



Fiber Cable, Singlemode, 432 ct., Single Armor, Single Jacket, Loose Tube, Low Water Peak, Dry/Gel. Price Per Ft. Our reels have a manufacturing variance of up to 5%, you will be billed for the quantity ...



Explore the differences between OS1, OS2 (single-mode) and OM1, OM2, OM3, OM4, OM5 (multimode) fibers. Learn their speeds, distances, and ideal uses for data centers and telecom networks.



These fibers ensure performance over the entire 1260nm to 1625nm spectrum and are compatible with legacy fiber and the geometric properties contributing to minimizing splice loss and increasing splice ...



Single-mode fibers are known for their lower attenuation and ability to transmit signals over exceptionally long distances. Featuring a smaller core diameter (typically 8-10 microns), they're ...



It can be used in all cable constructions, including loose tube, tight buffered, ribbon, and central tube designs. It supports long haul, metropolitan, access and premises applications in ...



Single mode fiber is designed with a small size fiber core that allows only one light signal to propagate. This reduces signal loss and enables much longer distances compared to multimode fibers.

## Contact Us

For more information, pricing, or custom data center solutions, please contact us:

Website: <https://yoahorroenergia.es>

Email: [hello@yoahorroenergia.es](mailto:hello@yoahorroenergia.es)

Phone: +233 54 318 7269

Address: Plot 28, Spintex Road, Accra, Greater Accra, Ghana

This document is for informational purposes only. Specifications subject to change without notice.

