

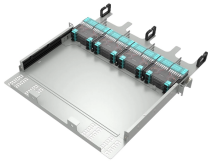
## Single-mode fiber yellow



## Single-mode fiber yellow



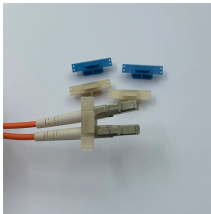
You can usually tell by the color of the cable jacket: single-mode fiber cables typically have a yellow jacket, while multimode cables are often orange, aqua, or lime green depending on the type.



Single-mode fiber (OS1 and OS2) always comes in a yellow jacket. OS1 is used for indoor, tight-buffered cabling, while OS2 is used outdoors or in ...



Yellow fiber optic cables are single mode cables, which means they transmit data through one slender string of fiberglass rather than multiple. Single mode cables are capable of near ...



Typically, a yellow jacket indicates single-mode fiber (OS1 and OS2), while orange signifies traditional multimode fiber (OM1 and OM2). Aqua is used for laser-optimized multimode ...



For single mode fiber with up to 12 strands, the standard exterior jacket color is yellow. This distinguishes it from multimode fiber, which has an orange jacket, or other cable varieties like CAT5 ...



Single mode fiber optic cable is made up of a small diameter glass or plastic core surrounded by cladding, which is a layer of reflective material. This small diameter core, typically around 9 microns ...



Single-mode fiber (OS1 and OS2) always comes in a yellow jacket. OS1 is used for indoor, tight-buffered cabling, while OS2 is used outdoors or in loose-tube designs. Both are built for ...



Single Mode is typically yellow, while Multimode is orange, aqua, or lime green. You can also check the labeling on the cable jacket — for example, “OS2 9/125” indicates Single Mode, and ...



This yellow 1000-foot spool of fiber optic distribution cable is intended to use for long-distance indoor runs at high data transfer speeds which is necessary to power today's advanced networks and ...



If you need to handle large amounts of data with the least dispersion, single mode fiber might be your best choice. Just take into consideration that these fibers are noticeably more ...



On the right, the yellow patchcord indicates singlemode fiber and the blue connector means it is a regular PC polished connector, If it were an APC connector, it would be green.

## Contact Us

For more information, pricing, or custom data center solutions, please contact us:

Website: <https://yoahorroenergia.es>

Email: [hello@yoahorroenergia.es](mailto:hello@yoahorroenergia.es)

Phone: +233 54 318 7269

Address: Plot 28, Spintex Road, Accra, Greater Accra, Ghana

This document is for informational purposes only. Specifications subject to change without notice.

