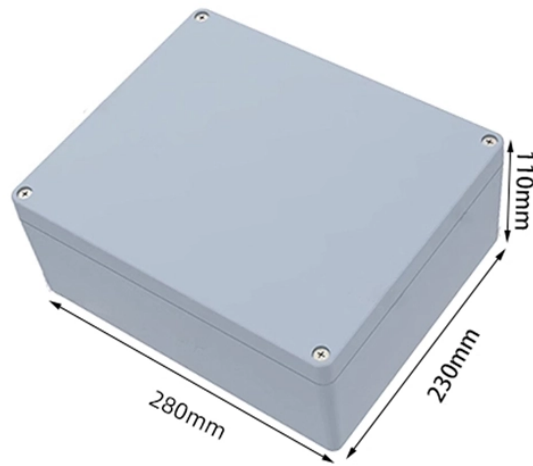
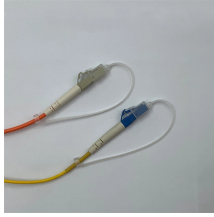


## Spacing above the distribution box



## Spacing above the distribution box



For indoor installations, the footprint space (width and depth of the equipment) extending from the floor to a height of 6 ft above the equipment or to the structural ceiling, whichever is lower, must be ...



For a typical residential panel operating at 120/240 volts, the required depth of the clear space is 36 inches, measured outward from the face of the enclosure. This 3-foot depth is the minimum ...



The dedicated equipment space also extends from the floor to a height of 6 feet above the equipment or to the structural ceiling, whichever is lower. An example is a 30-foot-high ceiling in a warehouse, with ...



Clearance: Electrical panels must be installed in a readily accessible area with a minimum clearance of 30 inches (762 mm) wide, 3 ft (36 inches or 914 mm) deep, and 6.5 feet ( $\approx$  2 meter) high in front of ...



Governed by NEC 110.26, these rules define the minimum Spaces about electrical equipment necessary for workers to perform tasks like inspection, maintenance, and replacement safely.



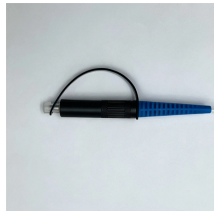
Electrical panel clearance requirements are based on NEC Article 110.26. The space must be at least 30 inches wide, or the width of the panel, whichever is greater. The NEC does not ...



Minimum clearances are established for work spaces in front of high voltage - electrical equipment such as switchboards, control panels, switches, circuit breakers, switchgear and motor controllers. These ...



This is the area directly above and in front of the panel, extending from the floor to 6 feet above the top of the equipment. Nothing unrelated to the electrical installation can occupy this zone ...



While this is the most commonly accessed area, it is often necessary to also have space above the panel and on each side as well. This means you cannot place machinery or other ...



Dedicated equipment space is the space equal to the width and depth of the equipment (the envelope of the equipment), extending from the floor to a height of 6 feet above the equipment or to the structural ...

## Contact Us

For more information, pricing, or custom data center solutions, please contact us:

Website: <https://yoahorroenergia.es>

Email: [hello@yoahorroenergia.es](mailto:hello@yoahorroenergia.es)

Phone: +233 54 318 7269

Address: Plot 28, Spintex Road, Accra, Greater Accra, Ghana

This document is for informational purposes only. Specifications subject to change without notice.

