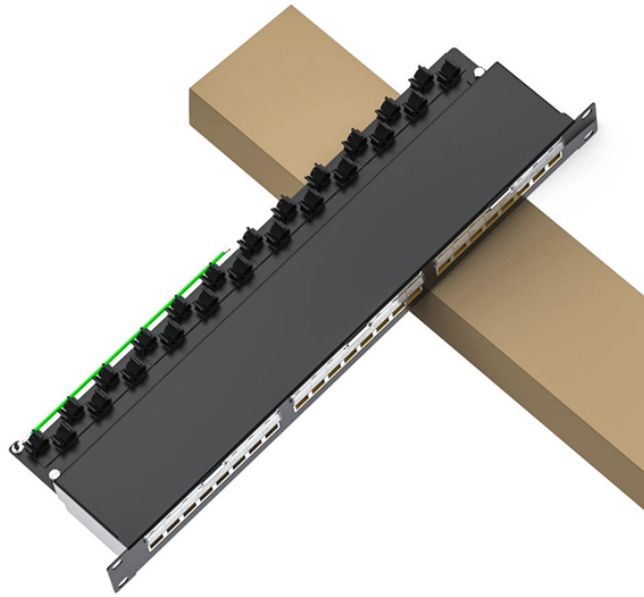


# Spacing of Cable Tray Hangers in Communication Equipment Rooms



## Overview

Cable Management Tray Size: Choose a tray size that will hold the desired amount and length of cable. Support Spacing: Remember the NEC requires no more than 4 feet of support spacing. Bend Radius: The tray cable bend radius should be supported to avoid damaging. Cable tray spacing is a critical aspect of electrical infrastructure, influencing both safety and efficiency. Whether you are working on power distribution systems, industrial installations, or commercial projects, adhering to cable tray spacing standards ensures smooth operations and minimizes. 1. 1 The latest versions of the following codes, standards, and guidelines shall be followed. Bring to the immediate attention of CCS if construction documents or conditions differ. us-trations without notice. Hubbell's strength is demonstrated by a long-standing reputation for supplying reliable. Delegated Design: Engage a qualified professional engineer, as defined in Section 014000 "Quality Requirements," to design cable tray supports and seismic bracing.

## Spacing of Cable Tray Hangers in Communication Equipment Rooms



Discover the essential cable tray spacing requirements for safe and efficient installation. Learn key standards, horizontal and vertical spacing, and more.



A minimum of 5 feet between walls and equipment bays will allow space for wall mounted copper cable terminations and the required 36" distance from equipment for work space.



3.2.2 All material to properly install the cable tray shall be provided. The cable tray system shall accommodate the weight of the horizontal and/or backbone cabling. The rung spacing shall be ...



Cable tray length is selected based on the load to be supported, the distance between the supports (also referred to as the span), and handling and installation constraints.



Fasten cables to the cable tray at the point of exit and support cables independent of the enclosure. The cable length between cable trays or between cable tray and enclosure shall be no more than 72 inches.



This guide covers cable ladder systems, cable tray systems, channel support systems and associated supports intended for the support and accommodation of cables and possibly other electrical ...



One of the most important features of cable tray is that tray cable can easily be installed in existing trays if there is space available. Cable tray wiring systems allow wiring additions or modifications to be ...



The use of space within the ETR and TR is dictated by LSU's policy statement PS114 and simply put dictates that "nothing other than ITS equipment, cables and cross- connects shall be allowed in ...



Explore the essential cable tray support spacing requirements for safe and efficient installations. Learn NEC guidelines for perforated, ladder, and wire mesh trays.



Some applications may require the cable tray to support the weight of a single, dead object in addition to the cable loads. Specifications typically require this to be applied at the midpoint of the span between ...



If it has excellent electrical continuity and is integrated in the installation's equipotential bonding system, a metal cable tray reduces the coupling's impact and thus contributes to good EMC of the electrical ...

## Contact Us

For more information, pricing, or custom data center solutions, please contact us:

Website: <https://yoahorroenergia.es>

Email: [hello@yoahorroenergia.es](mailto:hello@yoahorroenergia.es)

Phone: +233 54 318 7269

Address: Plot 28, Spintex Road, Accra, Greater Accra, Ghana

This document is for informational purposes only. Specifications subject to change without notice.

