

# Specifications and Models of Wind Power Optical Cable Junction Boxes



✓ 50KW/100KWH

✓ HIGHER POWER OUTPUT  
IN OFF-GRID MODE

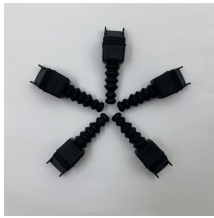
✓ CONVENIENT OPERATION  
& MAINTENANCE

✓ PRE-WIRED

## Overview

ADSS/OPGW Metal Junction Boxes come in various models for both tower and pole applications. They're available with different port configurations and fiber capacities, ranging from 12 to 60 fibers. The Fibre Optic Junction Boxes series of hazardous area terminal boxes, manufactured by Abtech and distributed by Thorne & Derrick is a range of fibre optic (FO) splice boxes designed for protection of optical fibre cable splices within hazardous areas with a particular focus on the Offshore Wind. VarioConnect 1U splice boxes are specifically designed for extreme vibration loads. They offer DIAMOND E2000 connectors that do not loosen due to movement, modular 7TE architecture for up to 72 fibers, and extendable splice boxes for maintenance during operation. At the heart of every wind turbine's electrical infrastructure lies a critical yet often overlooked component: the junction box. It connects trunk cables like OPGW to patch panels in control rooms.

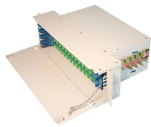
## Specifications and Models of Wind Power Optical Cable Junction Box



Frame dimensions shown below are typical and may vary depending on the application. \*Product design and specifications are subject to change without notice; please check the website for ...



Discover specialized fiber optic technologies for offshore and onshore wind farms, maritime environments and robust communication infrastructures for renewable energies



This document summarizes Nexans' junction solutions for cabling projects. It describes their onshore junction cabinet, transition junction box, offshore junction cabinet, and pre-terminated leads.



Our wind power custom designs have precise cable routing from the rear with 90°, 45° and 30° angles. This enables optimal adaptation to ring topology cabling between wind turbines without lateral ...



This stainless-steel enclosure is purpose-built for offshore installations and with an IP67 rating, it offers a secure termination point for fiber optic subsea cables that connect wind turbines to ...



ADSS/OPGW Metal Junction Boxes come in various models for both tower and pole applications. They're available with different port configurations and fiber capacities, ranging from 12 to 60 fibers. ...



For manufacturers and operators in the wind energy sector, understanding the role, specifications, and selection criteria for junction boxes is essential to maximizing turbine performance ...



CEEC will provide, install and test the Optical cable used to connect between CEEC Junction boxes (Junction box 11~15) and PECC2 Junction boxes. All fusion work relating to CEEC Junction box (Top ...



Abtech's Ex certified fibre management solution for hazardous areas provides protection for fibre optic cables on offshore wind farms. The FJC ensures the correct installation of optical ...



The junction boxes are designed to seal the incoming cables while accommodating varying diameter of fiber cables that might be used in the field. The sealing is accomplished by building up the cable ...

## Contact Us

For more information, pricing, or custom data center solutions, please contact us:

Website: <https://yoahorroenergia.es>

Email: [hello@yoahorroenergia.es](mailto:hello@yoahorroenergia.es)

Phone: +233 54 318 7269

Address: Plot 28, Spintex Road, Accra, Greater Accra, Ghana

This document is for informational purposes only. Specifications subject to change without notice.

