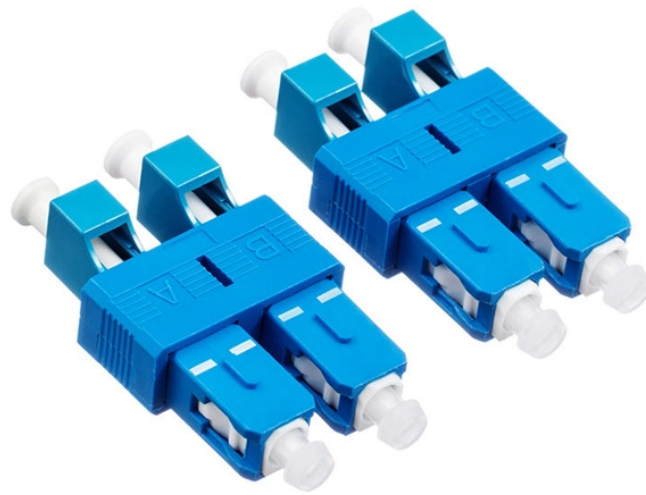


Standard Network Cabinet Construction



Standard Network Cabinet Construction



Legrand is a global provider of data center server and network cabinets, providing fully enclosed racks with side panels, front and rear doors, and roofs. We offer the most flexible cabinet and rack ...



Manufacturer: Chatsworth Zetaframe cabinets or submitted and owner-approved equivalent. The work covered here consists of the furnishing of all necessary labor, supervision, ...



Proper installation and setup of a network cabinet are crucial for ensuring the longevity and efficiency of your network equipment. Following these steps and best practices will help create a ...



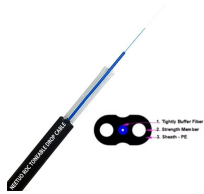
“A network cabinet is a metal shelter used for apprehending networking devices like routers, switches, patch panels and servers.” Such enclosures assist you in systematizing as well as ...



Cabinets, Thermal Management, Racks and Enclosures Our vast selection of cabinets, thermal management, racks, enclosures for data centers, telecommunications equipment rooms, and ...



The trend towards denser rack-mount servers has affected network enclosure design, resulting in a need for deeper cabinets. For instance, standard cabinets are at least 36 inches (900 mm) deep or even ...



Removable top and side panels by construction and design. Hubbell's network cabinets combine a static load rating of up to 2,000 pounds with full welded steel construction. The enclosures provide a solid ...



The cabinet or rack must be one of the following rack types: Standard 19" four-post EIA cabinet or rack, with mounting rails that conform to English universal hole spacing per section 1 of ANSI/EIA-310-D ...



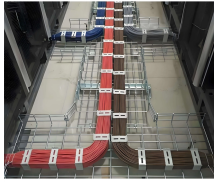
Get the network and server racks, wall mount cabinets, and cable pathways for your needs. Designed and engineered with installation and efficiency in mind.



This guide delves into the art and science of designing an efficient and effective network closet. It's not just about housing equipment, but creating a hub that supports and improves the ...



A 19-inch width is standard for network cabinets, matching the size of many servers and patch panels. The typical exterior width is 24 inches, but extra-wide cabinets are available for ...



In 2025, a network cabinet is a standardized, enclosed structure (typically 19-inch wide) designed to securely house, organize, protect, power, and cool active and passive network equipment such as ...

Contact Us

For more information, pricing, or custom data center solutions, please contact us:

Website: <https://yoahorroenergia.es>

Email: hello@yoahorroenergia.es

Phone: +233 54 318 7269

Address: Plot 28, Spintex Road, Accra, Greater Accra, Ghana

This document is for informational purposes only. Specifications subject to change without notice.

