

Standard UPS power supply configuration for monitoring systems



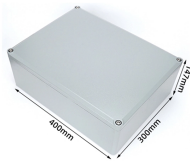
Standard UPS power supply configuration for monitoring systems



End-to-end UPS sizing for industrial and commercial facilities: load inventory, kW/kVA, inrush, runtime, batteries, redundancy, and verification with calculators.



Summary: This guide explores UPS configuration strategies for industrial, commercial, and renewable energy applications. Discover how proper sizing, battery selection, and system integration ensure ...



In this post, I want to explore uninterruptible power supply standards from the ground up: what they are, why they matter, and how they act as the backbone of reliable, safe, and efficient power continuity.



The purpose of this document is to provide an overview of the configuration and operation of the Single Module System (SMS) UPS and Multiple Module System (MMS) G Series and Z Series UPS to ...



UPS-CONF - Automatic Battery Detection - In this tutorial, you will find out how you can access the current values automatically of the detected battery using the ...



MMS Monitoring System auxiliary I/O interface outputs are utilized for system dry contacts offering UPS MMS status and alarm notification. 8 user selectable outputs (Q0 through Q7) are available, being ...



This comprehensive guide includes every thing you need to understand about industryleading poer protection solutions from aton rom plug and receptacle charts and facts about poer problems to an ...



These batteries guarantee the minimum level of autonomy (normally known as "standard autonomy") which is usually around 5 minutes for very small UPS, such as Line Interactive types with a power ...



he Eaton UPS and Power Management Fundamentals Handbook. From plug and receptacle charts and facts about power problems to an overview of various UPS topologies and factors affecting battery ...



From plug and receptacle charts and facts about power problems to an overview of various UPS topologies and factors affecting battery life, you'll find a wealth of pertinent resources designed to ...



Smaller UPS systems (e.g, up to 250 kVA) are commonly installed directly in the computer room along with their respective battery cabinets. The UPS and/or battery cabinets might be configured to look ...



The 2N system configuration is for two or three groups of UPS modules that supply power to two different power supplies in each IT load. For redundancy, an entire UPS group can stop working or ...

Contact Us

For more information, pricing, or custom data center solutions, please contact us:

Website: <https://yoahorroenergia.es>

Email: hello@yoahorroenergia.es

Phone: +233 54 318 7269

Address: Plot 28, Spintex Road, Accra, Greater Accra, Ghana

This document is for informational purposes only. Specifications subject to change without notice.

