

Substation Primary Distribution Box



Substation Primary Distribution Box



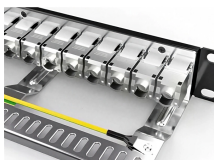
A typical primary distribution substation would include air-insulated outdoor-type high-voltage side (HV) and a metal-enclosed air-insulated indoor-type medium-voltage switchgear (MV).



It describes various types of substations, illustrates typical layouts, and presents guidelines to be used during detailed design. Information concerning insulation and electrical clearances are reviewed in ...



At a distribution substation, a substation transformer takes the incoming transmission-level voltage (35 to 230 kV) and steps it down to several distribution primary circuits, which fan out from the substation.



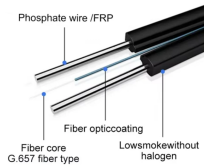
Primary unit substations are used to step down utility distribution voltages to in-plant distribution voltages. Primary unit substation transformers are designed, manufactured and tested in accordance ...



Typical equipment for this system arrangement is a single unit substation consisting of a fused primary switch, a transformer of sufficient size to supply the loads, and a low-voltage switchboard.



A newly constructed residential area introduces a 10kV power line to a substation. From the transformer's low-voltage side (0.4kV), power is distributed to a main distribution panel (primary ...



This article discusses primary distribution system transport of medium-voltage power from substations via feeders to local transformers to ensure reliable and efficient electricity delivery.



Utilities may have some control over and access to the energy stored in electric vehicles attached to the grid.



Primary distribution systems consist of feeders that deliver power from distribution substations to distribution transformers. A feeder usually begins with a feeder breaker at the ...



The primary distribution box refers to the main distribution box, typically located in the distribution room. These boxes feature bottom entry and exit cables, front-opening doors, and main ...

Contact Us

For more information, pricing, or custom data center solutions, please contact us:

Website: <https://yoahorroenergia.es>

Email: hello@yoahorroenergia.es

Phone: +233 54 318 7269

Address: Plot 28, Spintex Road, Accra, Greater Accra, Ghana

This document is for informational purposes only. Specifications subject to change without notice.

