

# Support distance for tubular busbars



## Support distance for tubular busbars



If you are developing a new product, at first you have to size the busbar support and spacing based on calculation and then test it. I don't think there is a single rule that applies to both ...



Minimum mechanical requirements for the connection style chosen must be considered for overall efficiency and cost effectiveness. The ground return conductor should be equal in size and circular ...



The table, in addition to giving specifications regarding the maximum thickness of the busbar, the maximum current and the maximum nominal voltage, distinguishes between busbars ...



Tin-plated busbars resist oxidation and provide stable contact resistance, making them common in most switchgear. Silver ...



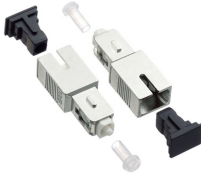
Support Distance: Space every 400 mm for mechanical rigidity By following the IEC standard for busbar sizing, this setup ensures the panel operates safely and efficiently under normal ...



Busbar supports with fixed interphase Busbar supports with adjustable interphase Insulators. Function Characteristics. SOCOMEC insulating busbar supports allow the fixation of a copper or aluminium ...



Tin-plated busbars resist oxidation and provide stable contact resistance, making them common in most switchgear. Silver-plated busbars offer even lower contact resistance and better ...



1) The document discusses parameters for calculating the distance between busbar supports, including short circuit level, busbar size and shape, conductor material, ...



Distance between two supporting points of Al. Tube = 8.050 m.



Using the information detailed hereunder, you can calculate which specifications the aluminium tubular busbars used in your projects must meet. The guidelines and methods of calculation detailed have ...



busbar systems. It defines the configuration of the busbar system, including bar section and distance between supports, according to the required electrical characteristics of the panel in complian



1) The document discusses parameters for calculating the distance between busbar supports, including short circuit level, busbar size and shape, conductor material, and support type.

## Contact Us

For more information, pricing, or custom data center solutions, please contact us:

Website: <https://yoahorroenergia.es>

Email: [hello@yoahorroenergia.es](mailto:hello@yoahorroenergia.es)

Phone: +233 54 318 7269

Address: Plot 28, Spintex Road, Accra, Greater Accra, Ghana

This document is for informational purposes only. Specifications subject to change without notice.

