

# Technical parameters of fiber optic cold splice intelligent door-to-door transportation



## Overview

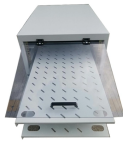
The ITS Branch has the following procedures in place to ensure the thoughtful, secure management of the ITS asset and systems. These documents are final procedures: The ITS Branch has several FiPi. Modern VarioConnect splice systems create the redundant, modular infrastructure that transportation companies need for critical applications. With up to 288 fibers in controlled technical rooms, they enable the networking of complex subway, suburban railroad and streetcar systems with optimum ease. Optical communication is now the dominant network transmission method in society, which is nothing more than because it has many advantages and is now a new transmission medium. The time that light transmits in the optical fiber will also have loss, and this type of loss is mainly due to the. This guide cuts through the complexity, comparing the core fiber splicing methods and outlining the precise steps required for a successful, low-loss connection. What is Fiber Optic Cable Splicing and Why is It Critical?

Fiber optic splicing is the process of joining two optical fibers end-to-end. As a leading provider of fiber optic infrastructure, Weunion leverages cutting-edge tools like the AI9 and AI10 fusion splicers, paired with. Fiber optic joints or terminations are made two ways: 1) splices which create a permanent joint between the two fibers or 2) connectors that mate two fibers to create a temporary joint and/or connect the fiber to a piece of network gear. Either joining method must have three primary characteristics. all-fiber networks.

## Technical parameters of fiber optic cold splice intelligent door-to-door



Learn fiber fusion splicing steps, tools, and troubleshooting with Weunion AI9/AI10 splicers & NK3200/NK4000 OTDRs. Optimize precision for FTTH, 5G, and data centers.



Network Architectures all-fiber networks. Whether you're deploying RFoG, GPON, EPON, or looking to evolve to XGS-PON or NG-PON to technologies, we can help you find success with either a home ...



Due to the ever changing and improving nature of ITS devices, ITS & Network Services maintains their own specific specifications. These specifications do change so make sure to check back frequently to ...



With up to 288 fibers in controlled technical rooms, a 5-year warranty and competitive prices, they offer optimal conditions for mission-critical public transport fiber optic networks.



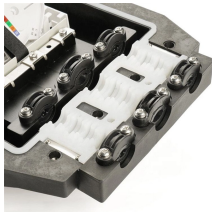
When it comes to deploying fiber networks, service operators encounter a range of challenges. CommScope addresses these challenges with a comprehensive family of fiber splice closures that ...



Fiber optic splicing is the process of joining two optical fibers end-to-end. Unlike using connectors, which are designed for frequent connection and disconnection at patch panels, splicing ...



With the rapid development of FTTH fiber-to-the-home, the demand for optical fiber cold splices has also greatly increased. The first monitoring and sorting of optical fiber quick connectors ...



1 General Information and Compliant Standard 1.1 General Information GJS-III-6001 Tape-Sealed Half Fiber Optic Splice Closure, adopts innovative design of curved-square whole hou of screws. Cable ...



The proper length of fiber is needed to allow splicing and then neatly storing fiber in the splice tray. Inside splice closures and at each end, cables with metallic shielding or strength members must be ...



This course teaches the essentials of splicing, testing and troubleshooting fiber optics systems, as well as the specialized Outside Plant knowledge required to work with Intelligent ...

## Contact Us

For more information, pricing, or custom data center solutions, please contact us:

Website: <https://yoahorroenergia.es>

Email: [hello@yoahorroenergia.es](mailto:hello@yoahorroenergia.es)

Phone: +233 54 318 7269

Address: Plot 28, Spintex Road, Accra, Greater Accra, Ghana

This document is for informational purposes only. Specifications subject to change without notice.

