

## The distribution box is underground



### Overview

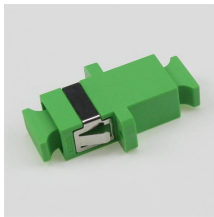
The distribution box is an essential component of a septic system that distributes wastewater evenly to the drain field. Think of it as a junction point for the lines. Explore our selection of underground utility boxes designed to offer superior protection and accessibility for various utility networks.



## The distribution box is underground



Distribution boxes are usually only about 6 inches to 2 feet deep. This narrows your search, but you'll need some other clues to help you find the exact location. If you still have the site ...



When a community has underground service, you won't see overhead powerlines, but you may notice an underground distribution box on or around your property. The box is used to connect the ...



Distribution boxes are commonly used in residential and commercial electrical systems. Also known as a distribution board, it's responsible for distributing the electrical power throughout the ...



Distribution boxes are essential components in electrical and telecommunications systems, providing a centralized point for cable distribution and connection. Their purpose is to streamline cable ...



Explore our selection of underground utility boxes designed to offer superior protection and accessibility for various utility networks. These underground pull boxes ensure safe and efficient management of ...



Underground power lines can extend in any direction from a pad-mount transformer. Never dig without calling 811 at least several days in advance of your planned digging.



A D-box, also known as a distribution box, is an underground chamber that distributes wastewater from the septic tank to the leach field. In the event of a septic system issue, the D-box ...



The distribution box, also known as the D-box, is a junction box positioned between the tank and the drain field. Its primary function is to evenly distribute the septic tank effluent (wastewater) from the ...



Explore the benefits of underground distribution systems in construction—key elements, real-world examples, and reasons for its growing popularity.



The distribution box, also known as the D-box, is a junction box positioned ...



You will usually find the distribution box buried a few feet underground, close to your septic tank or at the edge of your drain field. Start by looking for any visible access lids in these areas. Avoid digging ...



Underground power lines can extend in any direction from a pad-mount transformer. Never dig without calling 811 at least several days in advance of your planned ...

## Contact Us

For more information, pricing, or custom data center solutions, please contact us:

Website: <https://yoahorroenergia.es>

Email: [hello@yoahorroenergia.es](mailto:hello@yoahorroenergia.es)

Phone: +233 54 318 7269

Address: Plot 28, Spintex Road, Accra, Greater Accra, Ghana

This document is for informational purposes only. Specifications subject to change without notice.

