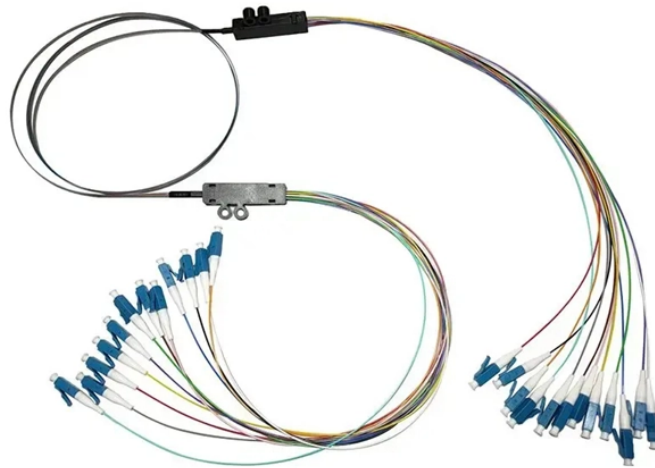


## The fiber optic splice box consists of three parts



### Overview

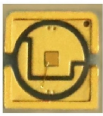
The typical termination box consists of three parts, the fiber connector protection element, the internal components, and the housing. It is equipped with 12 SC adapters and can work in outdoor environments. How can I pay for my order?

We accept T/T. A splice box (also known as splice distributor) is a housing in which fiber optic cables begin or end. In this response, we will focus on the. This guide optimizes the original text by delving deeper into the three pillars of fiber network longevity: the impact of splicing technology, the strategic selection of splice boxes, and the essential maintenance protocols needed to ensure sustained, high-speed functionality. The Critical Role. The FSB series of indoor wall mount enclosures are designed for centralized splice-only applications. It is important to distinguish.

## The fiber optic splice box consists of three parts



The sheath support part is the skeleton of the splice box, including brackets, optical cable fixing clips and optical fiber accommodating trays. They give the splice closure some mechanical ...



A termination box is a distribution box specially designed for the management of fiber cables. Its core use is to terminate fiber optic cables and connect the cable's core and pigtail. The typical termination ...



Wahr Cabling

From a functional perspective, a fiber optic splice closure must address three core requirements at the same time. The closure shields delicate ...



Horizontal fiber optic splice closures, also known as optical cable splice boxes, play an important role in the communications industry. It is a must-have device in the construction of optical ...



This guide optimizes the original text by delving deeper into the three pillars of fiber network longevity: the impact of splicing technology, the strategic selection of splice boxes, and the essential ...



The main components of a splice box are the splice cassette that picks up the fibers and their reserves, and the front panel which contains different connectors for transmitting signals via copper or fiber ...



The structure of the optical fiber splice box is mainly composed of the box body, the internal gold workpiece, the optical fiber movable connector and the spare accessories.



From a functional perspective, a fiber optic splice closure must address three core requirements at the same time. The closure shields delicate fiber splices from external forces such ...



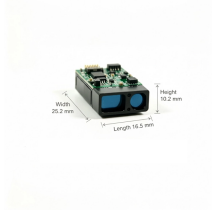
A termination box is a distribution box specially designed for the management of ...



Single fiber splice configurations allow up to three removable splice trays to be mounted into the box. An integrated "basket" provides loose tube storage below the splice trays and keeps tube storage ...



An optical cable split fiber box, also known as a fiber distribution box or fiber optic splice closure, is a device used to terminate, splice, and distribute optical fibers.



This guide optimizes the original text by delving deeper into the three pillars of fiber network longevity: the impact of splicing technology, the strategic selection of ...

## Contact Us

For more information, pricing, or custom data center solutions, please contact us:

Website: <https://yoahorroenergia.es>

Email: [hello@yoahorroenergia.es](mailto:hello@yoahorroenergia.es)

Phone: +233 54 318 7269

Address: Plot 28, Spintex Road, Accra, Greater Accra, Ghana

This document is for informational purposes only. Specifications subject to change without notice.

