

# The function of copper pipes in cable trays



## Overview

Cable trays and pipes work together to manage the flow of electricity, fluids, and gases, with cable trays primarily supporting electrical cables, and pipes transporting liquids, gases, and other materials. A cable tray is an organized support structure designed to secure and route these insulated electrical cables. It acts as a dedicated pathway for power distribution and data transmission, often supporting cables hidden behind walls or above ceilings. For large ampacity circuits, the most practical wiring system installations are those where reasonable size conductors are paralleled for each. In the electrical wiring of buildings, a cable tray system is used to support insulated electrical cables used for power distribution, control, and communication. The selection of material and finish is a function of the environment in which it is installed in a wide range of environments, and easily formable (Appendices II and III). For Stand-By UPS systems, the families are Internet Office, BC Pro® and BC Personal®.

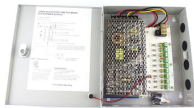
## The function of copper pipes in cable trays



Copper bars must be attached to the cable tray supports all along the cable tray paths. In any case, earth conductor cross section must be able to accept the maximum fault current during a short circuit.



Piping handbook referred to high temperature piping being routed over cable trays because the radiant heat could have an adverse effect on the cables.



Cable tray length is selected based on the load to be supported, the distance between the supports (also referred to as the span), and handling and installation constraints.



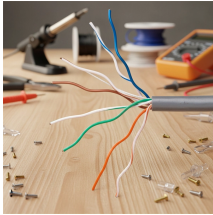
They are especially useful in situations where changes to a wiring system are anticipated, since new cables can be installed by laying them in the tray, instead of pulling them through a pipe.



The function is to provide a continuous, supported pathway that prevents cables from lying loose and vulnerable to physical damage. The system includes straight sections, fittings, and support hardware.



Tripp Lite's wire mesh Cable Tray System accommodates copper network cables, A/V cables and lightweight cables/cable bundles to reduce cable clutter in data centers, server rooms and other IT ...



Cable trays and pipes work together to manage the flow of electricity, fluids, and gases, with cable trays primarily supporting electrical cables, and pipes transporting liquids, gases, and ...



The main components of a cable tray system include tray sections, fittings, supports, and accessories. Together, these parts form a complete cable ...



Cable tray wiring systems have conductor advantages over conduit wiring systems where the installations involve phase conductors installed in parallel.



Cable trays are components of support systems for power and communications cables and wires. A cable tray system supports and protects both power and signal cables and facilitates ...



NEC Article 392 explains cable trays, their components, appropriate wiring methods for cable trays, and instances where they are and are not permitted for use. It also focuses on ...

## Contact Us

For more information, pricing, or custom data center solutions, please contact us:

Website: <https://yoahorroenergia.es>

Email: [hello@yoahorroenergia.es](mailto:hello@yoahorroenergia.es)

Phone: +233 54 318 7269

Address: Plot 28, Spintex Road, Accra, Greater Accra, Ghana

This document is for informational purposes only. Specifications subject to change without notice.

