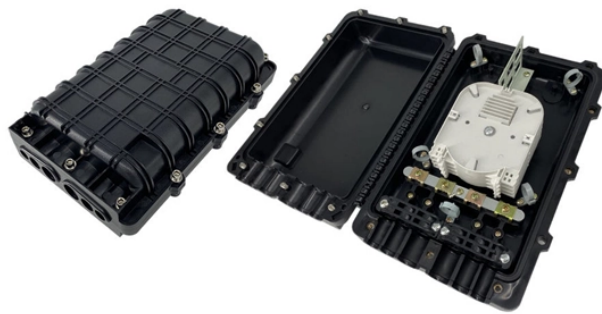


What does a 1 2 beam splitter look like



Overview

Cube beamsplitters are constructed using two typically right angle prisms (Figure 1). The hypotenuse surface of one prism is coated, and the two prisms are cemented together so that they form a cubic shape. It is a crucial part of many optical experimental and measurement systems, such as interferometers, also finding widespread application in fibre optic telecommunications. Beamsplitters are often classified according to their construction: cube or plate. An Optical Beamsplitter is an optic or optical device that is used to split a beam of light in two. It provides an expert-curated supplier directory, buyer-focused technical background information, and structured selection criteria to support professional procurement decisions.



The meaning of DOES is present tense third-person singular of do; plural of doe.



In addition to the task of dividing light, beamsplitters can be employed to recombine two separate light beams or images into a single path. This interactive tutorial explores transmission and reflection of a ...



Both do and does are present tense forms of the verb do. Which is the correct form to use depends on the subject of your sentence. In this article, we'll explain the difference between do ...



Learn about optical splitter split ratios (1:N, 2:N), centralized vs. cascaded architectures, and how to choose the right setup for FTTH PON networks.



DOES meaning: 1. he/she/it form of do 2. he/she/it form of do 3. present simple of do, used with he/she/it. Learn more.



This article explores the technological foundation, real-world use cases, and product selection strategies for 1x2 fiber optic splitters, with a focus on ...



Beamsplitters are often classified according to their construction: cube or plate (Table 1). Cube beamsplitters are constructed using two typically right angle prisms (Figure 1). The hypotenuse ...



Fiber optic splitters are integral components in the world of optical networks. They are devices that split an incident light beam into several light beams at certain ...



Many beam splitters have the form of a cube, where the beam separation occurs at an interface within the cube (Figure 2). Such a cube is often made of two triangular glass prisms which are glued ...



Examples of "does" in a sentence does These examples have been automatically selected and may contain sensitive content that does not reflect the opinions or policies of Collins, or its parent ...



Definition of does verb in Oxford Advanced Learner's Dictionary. Meaning, pronunciation, picture, example sentences, grammar, usage notes, synonyms and more.



DOES definition: a plural of doe. See examples of does used in a sentence.



Discover when to use do and does in English grammar. Learn the rules for questions and negatives, see clear examples, and practice with easy exercises to master correct usage.



Stop guessing between do vs. does! Learn the easy rules for questions, negatives, and emphasis with our 10-second subject-verb chart.



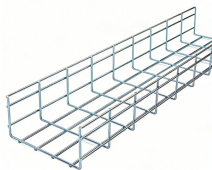
To reduce loss of light due to absorption by the reflective coating, so-called "Swiss-cheese" beam-splitter mirrors have been used. Originally, these were sheets of highly polished metal perforated with ...



This PLC Splitter is a 1x2, with 1 input and 2 output fibers with an even split ratio across all fibers regardless of input wavelength. PLC Splitters are available with 900µm loose tube singlemode fiber ...



This article explores the technological foundation, real-world use cases, and product selection strategies for 1x2 fiber optic splitters, with a focus on Filter Type Fiber Splitter options ...



This PLC Splitter is a 1x2, with 1 input and 2 output fibers with an even split ratio ...

Contact Us

For more information, pricing, or custom data center solutions, please contact us:

Website: <https://yoahorroenergia.es>

Email: hello@yoahorroenergia.es

Phone: +233 54 318 7269

Address: Plot 28, Spintex Road, Accra, Greater Accra, Ghana

This document is for informational purposes only. Specifications subject to change without notice.

