

# What is accessing a PoE switch



## Overview

A PoE switch simplifies networking by combining data and power at a lower cost, eliminating the need for electrical outlets so that the placement of devices becomes more flexible. It is often used in VOIP phones, IP security cameras, and Wi-Fi access points. Power over Ethernet (PoE) is technology that passes electric power and data over twisted-pair Ethernet cable to wireless access points, IP cameras, and VoIP phones. It enables one RJ45 patch cable to provide both a data connection and electric power to connected edge devices instead of having a. Quick Answer: What is a PoE Switch?

A PoE switch is a special network switch that sends electricity and internet data through one regular Ethernet cable (like the ones you use for Wi-Fi or computers). A PoE switch provides power and.

## What is accessing a PoE switch



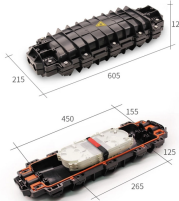
Learn everything about PoE switches-how they work, their key benefits, common applications, limitations, and how to choose the right one for ...



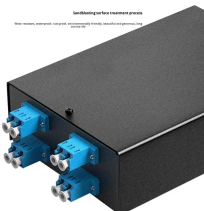
A PoE network switch, obeying an IEEE 802.3af standard, delivers power of up to 12.95W for a PD with a voltage range of 37V to 57V. When users install this switch, their devices work in ...



Learn everything about PoE switches-how they work, their key benefits, common applications, limitations, and how to choose the right one for your network setup.



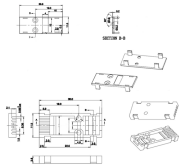
A Power over Ethernet switch both enables communication among network clients and provides power using the same RJ45 network cable to PoE-enabled edge devices, such as VoIP ...



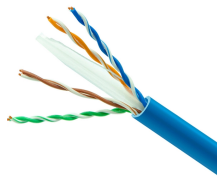
They power essential devices like security cameras, access points, and VoIP phones without the need for extra wiring. This guide breaks down how PoE switches work, what they can ...



Access the PoE switch's management interface using a web browser or dedicated software. Set up essential parameters such as IP addresses, VLANs, QoS, and security settings to ...



Learn what is a PoE switch, how it works, types, power budgets, and real uses. Simple 2025 guide for home, office, and installers and shops.



A PoE switch is a network switch that provides both power and data transmission over a single Ethernet cable to connected devices. This allows network devices like IP cameras, wireless access points, ...



While a regular switch only transmits data, a PoE switch can supply power to compatible devices like IP cameras or access points without requiring separate power sources.



A PoE (Power over Ethernet) switch is a network switch that delivers both power and data through a single Ethernet cable to connected devices such as IP cameras, VoIP phones, wireless access ...



What is a PoE switch (Power over Ethernet switch)? Power over Ethernet switch (or PoE switch) is an access layer technology that combines data signals and electrical power into a single ...

## Contact Us

For more information, pricing, or custom data center solutions, please contact us:

Website: <https://yoahorroenergia.es>

Email: [hello@yoahorroenergia.es](mailto:hello@yoahorroenergia.es)

Phone: +233 54 318 7269

Address: Plot 28, Spintex Road, Accra, Greater Accra, Ghana

This document is for informational purposes only. Specifications subject to change without notice.

