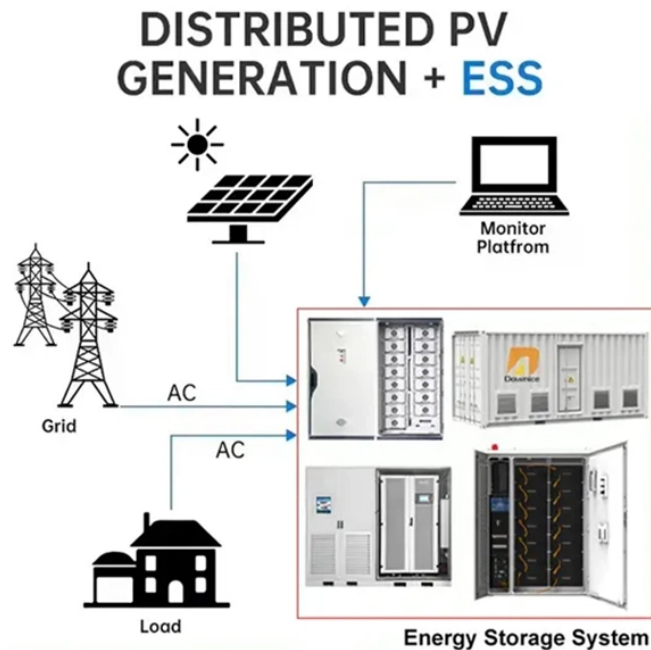


What is power busbar wiring



Overview

A busbar is a common electrical junction point used to consolidate multiple wires, acting as a central hub for power distribution. In DC systems, such as those found in RVs, boats, or solar power setups, busbars organize complex wiring into a clean, orderly arrangement. It helps distribute electricity efficiently within systems like switchgear, substations, and industrial panels. Each PDB feeds a specific part of the control panel, which, as enclosures continue to require more power in service of. Electrical busbars have emerged as a critical solution, offering a compact, low-resistance conductor that simplifies layouts, enhances thermal management, and ensures reliable power flow in applications ranging from substations to robotics. An electrical busbar is a solid.

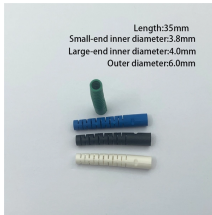
What is power busbar wiring



Electrical busbars are solid conductors used to carry and distribute high current in switchgear, panels, substations, and power systems. This guide explains how busbars work, ...



Learn what a busbar is, how it works, its types, applications, advantages, and differences between busbars and cables in electrical systems.



What is an electrical bus bar? An electrical busbar ("bus bar" or "buss bar") is a heavy-duty conductor, typically a metallic bar or strip, that carries high currents within electrical equipment. ...



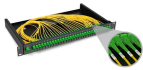
The performance and safety advantages they offer
What Is an Electrical Busbar? An electrical busbar is a metallic strip or bar that carries large currents within electrical distribution ...



A busbar is a common electrical junction point used to consolidate multiple wires, acting as a central hub for power distribution. In DC systems, such as those found in RVs, boats, or solar power setups, ...



Busbar power distribution removes both the bulky PDUs and the line-side wiring and cable management necessary to electrify enclosures. What's more, busbar power panels can more easily accommodate ...



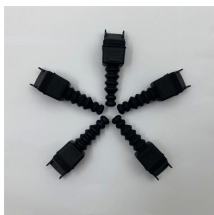
Discover what a bus bar is in electrical systems, how it works, the different types, materials used, key benefits, and where it's applied. Cover everything you need to know about bus bars in modern power ...



A busbar is a rigid conductor, typically made of copper or aluminum, that serves as a common connection point for multiple circuits within electrical enclosures. It provides a low-resistance path for ...



Get answers for advantages and common uses for electric busbars, types of busbars, and how simulation tools complement the design process.



At its core, an electrical busbar is a metallic junction where multiple electrical currents meet—organizing the chaos of power flow into a neat, streamlined process. So, the purpose of a ...

Contact Us

For more information, pricing, or custom data center solutions, please contact us:

Website: <https://yoahorroenergia.es>

Email: hello@yoahorroenergia.es

Phone: +233 54 318 7269

Address: Plot 28, Spintex Road, Accra, Greater Accra, Ghana

This document is for informational purposes only. Specifications subject to change without notice.

