

# What is the ranking of Slovakian explosion-proof distribution boxes



## Overview

Options range from Ex d (flameproof enclosure) to Ex e (increased safety) and Ex i (intrinsically safe) right through to Ex p (pressurized housing), as well as combinations of different explosion-protection types – always bearing in mind the most efficient solution for your. Options range from Ex d (flameproof enclosure) to Ex e (increased safety) and Ex i (intrinsically safe) right through to Ex p (pressurized housing), as well as combinations of different explosion-protection types – always bearing in mind the most efficient solution for your. Specification code(I,II,IIB. Flameproof enclosure (Ex d IIB+H2), which can be used as feed distribution equipment in control and distribution system (such as distribution box, switch box of main circuit, control box, terminal box or motor starting box etc. ) ·Enclosure: stainless steel. Equipped. The global Explosion-Proof Distribution Box market was valued at US\$ million in 2025 and is anticipated to reach US\$ million by 2032, at a CAGR of %from 2026 to 2032. tariff policies introduce profound uncertainty into the global economic landscape. BARTEC. Established in 1990, CZ Electric Co. is an experienced Explosion-proof isolation switch Manufacturers, headquartered in Jiaxing City, Zhejiang Province, with more than 30 years of experience in industry

solutions, professional Wholesale Explosion-proof MCB box, all explosion-proof products. Safely conduct, connect and distribute energy in hazardous areas with R. We offer bespoke, custom-made terminal boxes and terminal box combinations, as well as standard products with short delivery times.

## What is the ranking of Slovakian explosion-proof distribution boxes



We offer bespoke, custom-made terminal boxes and terminal box combinations, as well as standard products with short delivery times. Our products are certified for installation technologies all over the ...



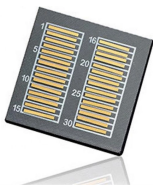
The global Explosion-Proof Distribution Box market was valued at US\$ million in 2025 and is anticipated to reach US\$ million by 2032, at a CAGR of %from 2026 to 2032.



These meet the highest requirements, from high-current distribution with 7600A to motor control for a few kilowatts. With the involvement of our customers right from the start, we offer significantly ...



These are available in a range of materials including Stainless Steel, GRP & Sheet Steel from IP42 (Indoor) to IP 66 (Outdoor) Applications.



The main products have obtained ATEX EU explosion-proof certification and IECEx international explosion-proof certification. CZ has agents or offices in 28 countries and regions, and welcomes ...

Rear of the optical fiber distribution box



The enclosures are certified Ex d IIB+H2 and Ex tb as well as "explosion-proof". They are available in many sizes, a wide range of operating elements and monitoring functions can be integrated. They ...



These explosion proof junction boxes / terminal boxes, plugs, sockets & connectors are for use in explosive atmospheres in compliance with the ATEX 94/9/EC Directive and IEC.



All explosion-proof enclosures, lighting or power distribution boxes are manufactured using the latest technologies, both mechanical and electrical, using materials able to resist in most highly corrosive ...



Ex Local Control Stations & Distribution Boxes  
Atexdelvalle offers world-class explosion-protected solutions guaranteeing highest quality and performance with no compromise.



Equipped with specialized hinge structure, which can prevent the flameproof joints from damage when opening and closing the panels, and greatly prolong the service life of box. The boxes can be ...

## Contact Us

For more information, pricing, or custom data center solutions, please contact us:

Website: <https://yoahorroenergia.es>

Email: [hello@yoahorroenergia.es](mailto:hello@yoahorroenergia.es)

Phone: +233 54 318 7269

Address: Plot 28, Spintex Road, Accra, Greater Accra, Ghana

This document is for informational purposes only. Specifications subject to change without notice.

