

## What is the typical size of a wire mesh cable tray server room



## What is the typical size of a wire mesh cable tray server room



Use this cable tray sizing calculator to check fill %, select tray size, and comply with IEC 61537 & NEC 392 with formulas, example and checklist.



WM wire mesh cable tray, for light duty jobs, comes in standard height of 50mm, 100mm and 150mm. WM wire mesh cable trays are ideal for commercial and data center cable management, providing a ...



The average load-bearing capacity per meter and span are related to cable tray width, height, wire diameter, cross-sectional dimensions, and other parameters. The above load-bearing data is for ...



This report provides a comprehensive analysis of the wire mesh tray market, focusing on standard dimensions, emerging size trends for data centers, and the competitive landscape for ...



Learn cable tray sizing with accurate width and dimension calculations. Avoid common mistakes for efficient cable management. Read our expert guide now!



We will first explain standard cable tray dimensions used across the industry, then examine how dimensions vary by tray type, and finally show how to ...



2 wire mesh cable tray sections are 1,500 mm long, 300 mm wide and 100 mm tall ...



We will first explain standard cable tray dimensions used across the industry, then examine how dimensions vary by tray type, and finally show how to calculate and select the correct ...



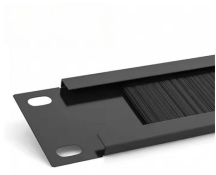
Bends, Risers, T Junctions, Crosses and Reducers can be made from wire mesh cable tray straight sections flexibly in projects. Trays shall be supported at a maximum span of 2.5m by trapeze, wall, ...



2 wire mesh cable tray sections are 1,500 mm long, 300 mm wide and 100 mm tall to organize copper cabling and eliminate clutter and stress in your data center.



Choosing the right cable tray type is essential and is usually specified by an engineer or project designer. The selection depends on several factors such as the number of cables, cable weight, ...



Learn how to calculate the perfect cable tray size and dimensions for your electrical project. This guide covers load capacity, fill ratios, and industry standards.

## Contact Us

For more information, pricing, or custom data center solutions, please contact us:

Website: <https://yoahorroenergia.es>

Email: [hello@yoahorroenergia.es](mailto:hello@yoahorroenergia.es)

Phone: +233 54 318 7269

Address: Plot 28, Spintex Road, Accra, Greater Accra, Ghana

This document is for informational purposes only. Specifications subject to change without notice.

