

# What level of electrical distribution box does the household belong to



## Overview

The main electrical panel, commonly called the breaker box, is the central distribution point for all power inside the home. The main service disconnect feeds the panel's two main bus bars, which carry the two 120-volt "hot" legs of power. Standard household circuits operate at 120 volts by drawing. A distribution board (also known as panelboard, circuit breaker panel, breaker panel, circuit breaker, electric panel, fuse box or DB box) is a component of an electricity supply system that divides an electrical power feed into subsidiary circuits while providing a protective fuse or circuit. The National Electrical Code (NEC) provides comprehensive safety standards for electrical installations, including requirements for electrical panels (main service panels and subpanels or breaker box). NEC Article 408 covers switchboards, switchgear, and Panelboards installation and applications. This voltage is stepped down through transformers (usually mounted on poles) to a level suitable for residential use. Let's make an example for clarity: A newly constructed residential area introduces a 10kV power line to a substation. 4kV), power is distributed to a main distribution panel.

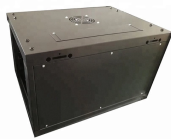
## What level of electrical distribution box does the household belong



The National Electrical Code (NEC) provides comprehensive safety standards for electrical installations, including requirements for electrical panels (main service panels and subpanels or breaker box).



Generally, first level distribution does not allow direct use of electrical equipment, and second level distribution will be by power equipment because it is three-phase electricity, while third ...



What Is a Home Circuit Breaker Panel? This wall-mounted metal box connects the power grid to your home's wiring. It receives electricity from power lines, which may either be buried or strung on poles.



In the United Kingdom, BS 7671 defines a consumer unit as "A particular type of distribution board comprising a type tested coordinated assembly for the control and distribution of electrical energy, ...



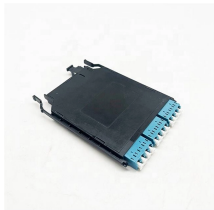
The main electrical panel, commonly called the breaker box, is the central distribution point for all power inside the home. The main service disconnect feeds the panel's two main bus ...



An electrical distribution box is the central control point for your building's electrical system. Think of it as a traffic control center for electricity—power comes in through one main line, ...



Tertiary: Final distribution point for equipment or household use. This structure ensures effective power management, safety, and reliability in complex electrical systems, particularly on construction sites or ...



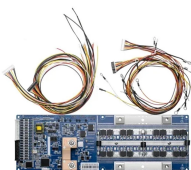
Once electricity is carried beyond your meter, it is distributed to lights, receptacles, and appliances throughout the house by several different electrical circuits.



To solve the mystery behind these mini-outages, look at your home's main electrical service panel or breaker box—the distribution center for all the electricity you consume.



The main service panel - sometimes called a load center or breaker box - is essentially your home's electrical command center. Inside this modest metal box lies a sophisticated system of ...



Overview  
United Kingdom  
North America  
Manufacturer differences  
Location and designation  
Theatre lighting

## Contact Us

For more information, pricing, or custom data center solutions, please contact us:

Website: <https://yoahorroenergia.es>

Email: [hello@yoahorroenergia.es](mailto:hello@yoahorroenergia.es)

Phone: +233 54 318 7269

Address: Plot 28, Spintex Road, Accra, Greater Accra, Ghana

This document is for informational purposes only. Specifications subject to change without notice.

