

What specifications is the JXF distribution box

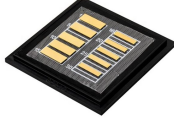


Overview

The boxes are made of cold-rolled steel or stainless steel, have an IP55 rating, and come in various standard sizes from 200x200x150mm to 1800x1000x300mm. JXF Series Power Distribution Box product is box assembled with various control functions by customer-selected components, and there are many box sizes and specifications and the size of the box can be customized according to the size of the installation elements. It is used in the AC 50Hz power. duct, please dispose the pro ormal operation due to poor manufacture quality. A paid repair will be provided if the warranty period expires. For single row. JXF distribution box is suitable for three-phase three-wire, three-phase four-wire, three-phase five-wire systems with 50Hz, 500V and below, and load current not greater than 250A. It can control the power distribution system, leakage protection, and overload, short circuit, phase loss protection. Low Voltage Switchgear JXF Low-voltage Integrated Distribution Box General JXF Low-voltage Integrated Distribution Box Application: mainly applicable in places with high automation and need to communicate with computer, like large power station and petrochemistry system, as the low voltage. JXF Metal Enclosure provide Control, monitoring, measurement and

protection for the electric power loops and main power controlling equipment.

What specifications is the JXF distribution box



This document provides specifications for JXF series metal sheet distribution boxes manufactured by Zhejiang Farady Electric Co., Ltd. The boxes are made of cold-rolled steel or stainless steel, have an ...



It is widely applies in industrial and civil architectures as the dynamical, light distribution and automatic control in the power system, with the voltage of 380V or lower, frequency of 50HZ.



Open-mounted distribution box installation method: Assemble four bolts into the four holes on the corners and tighten them into the expansion pipes to fix the box.



JXF distribution box is suitable for three-phase three-wire, three-phase four-wire, three-phase five-wire systems with 50Hz, 500V and below, and load current not greater than 250A.



JXF Distribution box is suitable for three-phase three wire, three-phase four wire, and three-phase five wire systems with 50Hz, 500V and below, and load current not exceeding 250A provides ...



Power your operations with the JXF Power Distribution Box from CABA Electric. Rated 220V-380V and up to 400A, it offers IP65 protection, long life, and flexible configurations for dependable performance.



Customized electrical power distribution box for sale supplier in China, with excellent low voltage distribution box design team. Buy bulk and wholesale medals from us.



JXF Series Power Distribution Box product is box assembled with various control functions by customer-selected components, and there are many box sizes and specifications and the size of ...



Application: mainly applicable in places with high automation and need to communicate with computer, like large power station and petrochemistry system, as the low voltage distribution device of the ...



It is widely applies in industrial and civil architectures as the dynamical, light distribution and automatic control in the power system, with the voltage of 380V ...



JXF control box is suitable for three-phase three-wire, three-phase four-wire, three-phase five-wire systems with 50Hz, 500V and below, and load current not greater than 250A.

Contact Us

For more information, pricing, or custom data center solutions, please contact us:

Website: <https://yoahorroenergia.es>

Email: hello@yoahorroenergia.es

Phone: +233 54 318 7269

Address: Plot 28, Spintex Road, Accra, Greater Accra, Ghana

This document is for informational purposes only. Specifications subject to change without notice.

