

# What to connect to the optical port of a switch



## Overview

The SFP port is commonly found on Gigabit Ethernet switches and is primarily used for fiber optic device connections or for uplinking 1G switches to aggregation/core layer devices, providing higher-bandwidth links. You can add a compatible SFP transceiver module to the SFP port of. Enterprise LANs use the RJ45 port on 100/1000BASE switches. It connects access layer devices and uplinks from desktop switches or directly to end devices. Unlike fixed RJ45 copper ports, SFP ports support both fiber and copper modules, enabling far longer distances, greater flexibility, and improved scalability in enterprise. SFP ports are commonly found in switches, routers, network interface cards (NICs), and other networking equipment. They come in various form factors such as SFP, SFP+, QSFP+, and XFP. Fiber provides: Increased internet signal bandwidth.

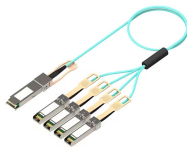
## What to connect to the optical port of a switch



Learn what an SFP port is on a Gigabit switch, the types of SFP ports, SFP vs RJ45 differences, long-distance fiber options and real-world use cases.



Forgot your password? By clicking "Sign In", I confirm that I have read and agree to the terms of the McGraw Hill Terms of Use, the Video Viewing Notice, the Consumer Purchase Terms if applicable, ...



SFP modules provide the fiber optic connection for network switchers with fiber optic (SFP) ports. The modules are swappable and are specific to either duplex multimode fiber or duplex single mode fiber.



Members pay low monthly contributions, deductibles, and copays; and receive excellent coverage. Adventist Health offers comprehensive benefits emphasizing a whole-person focus on physical, ...



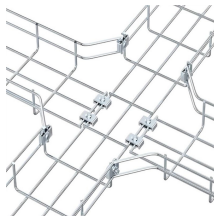
Check your registered MFA device to respond, if applicable...



An introduction to SFP ports on a Gigabit switch  
SFP ports enable Gigabit switches to connect to a variety of fiber and Ethernet cables and extend switching functionality throughout the ...



A: An RJ45 port is a standard Ethernet port that uses copper cables, while an SFP port is a modular interface that allows for different types of lines, including fiber optic cables.



This guide will walk you through the process of connecting a switch to a fiber optic network, covering the necessary components, steps, and considerations to ensure a smooth setup.

Length:14.5mm  
Small-end inner diameter:2.0mm  
Large-end inner diameter:3.5mm  
Outer diameter:5.2mm



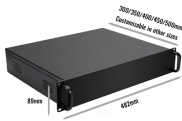
Connect Fiber Cables: Attach the correct port corresponding to the fiber optic cables to the SFP transceiver. Ensure the ports match and all proper connections are made to the RX and TX ports.



Forgot password? Don't have an account?



Connect - Researcher App Loading



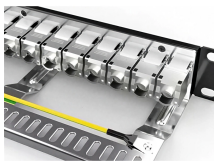
## Garmin Connect | Sign In



Forgot your password? Forgot your username?  
Need help? ©2026 McGraw Hill. All Rights Reserved.



With Connect, each of your students can enjoy a personalized digital learning experience designed to help them optimize study time and ramp up their grade potential.



Running, walking, cycling, swimming, skiing, triathlons - no matter how you move, you can record your active lifestyle on Garmin Connect. It's the only online community created specifically for Garmin ...



Switch optical modules, which convert electrical signals to optical signals and vice - versa, and optical interfaces, which serve as the physical connection points, play a pivotal role in ...



On Ethernet switches, SFP28 ports play a critical role in enabling high-speed, high-density connectivity. They allow seamless connection to 25G servers, network interface cards ...



Ensure it's securely connected. Connect the fiber optic cable: Attach the fiber optic cable's connector to the transceiver module on the switch. Make sure the connector type (e.g., SC, LC) ...



In broadband access networks, OLT equipment utilizes SFP ports to connect with optical splitters, where a single SFP port can support a 1:32 split ...



In broadband access networks, OLT equipment utilizes SFP ports to connect with optical splitters, where a single SFP port can support a 1:32 split ratio, enabling efficient fiber-to-the-home ...

## Contact Us

For more information, pricing, or custom data center solutions, please contact us:

Website: <https://yoahorroenergia.es>

Email: [hello@yoahorroenergia.es](mailto:hello@yoahorroenergia.es)

Phone: +233 54 318 7269

Address: Plot 28, Spintex Road, Accra, Greater Accra, Ghana

This document is for informational purposes only. Specifications subject to change without notice.

