

Where is the small busbar on the top of the switchgear cabinet



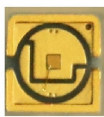
Overview

The horizontal busbars are placed at the top of the switchgear and/or at the bottom. They are connected with screwed joints between each cubicle unit, thus simplifying assembly, replacement and extension. Basic Definition of the Small Busbar at the Top of the High-Voltage Cabinet The small busbar at the top of the high-voltage cabinet, as the name suggests, is a small busbar device. The busbar system is the central component of any switchgear cabinet. It acts as the main electrical pathway that distributes power from the incoming supply to multiple outgoing circuits. There are measurement PT and measurement PT in the PT cabinet (the original requirement is to separate the measurement PT and the measurement PT, if there is no special requirement, they can be. Here, we provide an overview of common substation busbar configurations—Single Bus, Main and Transfer, Double Breaker/Double Bus, Ring Bus/Ring Main, and Breaker and a Half. Designing a substation involves not only the visible equipment and ratings but also the less apparent factors—operational.

Where is the small busbar on the top of the switchgear cabinet



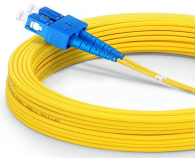
Flexible and solid busbars made of copper, aluminum or CoppAl® serve as the central distribution board in your switchgear. With our know-how and individual components, we always engineer your system ...



The horizontal busbars are placed at the top of the switchgear and/or at the bottom. They are connected with screwed joints between each cubicle unit, thus simplifying assembly, replacement and extension.



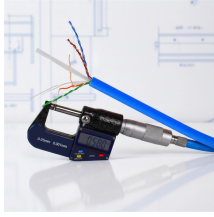
(3) Provide operation and control power (PT) for related equipment. (4) Meet the needs of electrical system relay protection. Busbar insulation, ...



It may be installed on the top, middle or bottom of the switchboard depending on the type of switchboard, customer specifications and/or local practices, Distribution busbars connected to the ...



Here, we provide an overview of common substation busbar configurations—Single Bus, Main and Transfer, Double Breaker/Double Bus, Ring Bus/Ring Main, and Breaker and a Half.



The busbar system is the central component of any switchgear cabinet. It acts as the main electrical pathway that distributes power from the incoming supply to multiple outgoing circuits.



View and Download ABB ZS1 instruction manual online. Air-insulated medium voltage switchgear, 12 kV/17.5 kV. ZS1 industrial equipment pdf manual download.



The small busbar at the top of the high-voltage cabinet is generally made of copper or aluminum, with good conductivity and corrosion resistance. Its structure is compact and ingeniously designed to ...



The ground bus bar is designed to use one single bar across the sections or the shipping pallet, this bus bar is provided at the bottom-rear side of each section running from side-to-side on the cable ...



The horizontal busbars are placed at the top of the switchgear and/or at the bottom. They are connected with screwed joints between each cubicle unit, thus simplifying assembly, replacement and extension.



The maximum mains rating, bus bar rating, load center cover number, lug torque data, and short circuit current rating will be located on the box label of the load centers. The box label is ...

Contact Us

For more information, pricing, or custom data center solutions, please contact us:

Website: <https://yoahorroenergia.es>

Email: hello@yoahorroenergia.es

Phone: +233 54 318 7269

Address: Plot 28, Spintex Road, Accra, Greater Accra, Ghana

This document is for informational purposes only. Specifications subject to change without notice.

