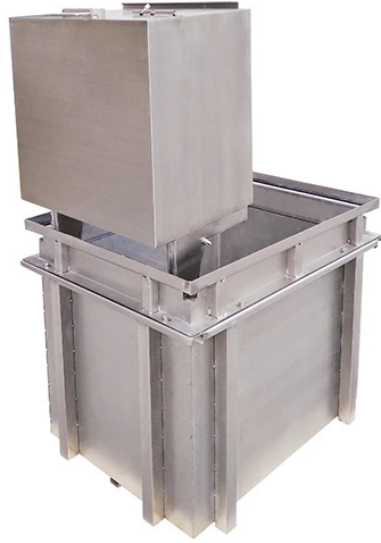


# **Which 8-core outdoor wiring box is more reliable**



## Which 8-core outdoor wiring box is more reliable



Made for indoor and outdoor installations, this electrical enclosure box is a reliable choice for low-voltage distribution and year-round equipment protection. From homes and workshops to commercial and ...



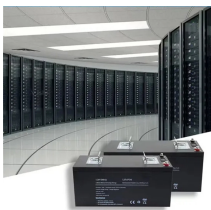
The VEVOR electric enclosure box is made of high-quality carbon steel. Precise lock design, high-strength hinges, sealing strips, and IP66 protection grade are all used to protect your plug-ins, power ...



Made for indoor and outdoor installations, this electrical enclosure box ...



Choosing the right junction box for outdoor lighting ensures longevity, safety, and dependable performance in varying weather. This guide highlights five top options that balance ...



Learn why IP68 junction boxes are the best choice for outdoor wiring. Discover waterproof protection, cable compatibility, and installation tips to ensure safe, long-lasting electrical connections.



It facilitates fiber splicing, splitting, and distribution while offering robust protection and efficient management for network infrastructure. Suitable for pole or wall mounting, this distribution box ...



This guide highlights five reliable exterior cable boxes, covering IP ratings, mounting options, and internal dimensions to help you pick the right enclosure for outdoor cable management.



This guide highlights five reliable options, focusing on IP ratings, number of cable entry ports, and capacity to defend connections in yard, garden, or patio installations.



Learn what an outdoor electrical junction box is, NEC 314 requirements, types like pull boxes and splice boxes, proper sizing rules, and when you need weatherproof protection.



Based on curation and deep research of top-rated products, we've identified five outstanding outdoor junction boxes that deliver reliable protection for residential and commercial applications.



This box measures 8×8 inches (length x width), with depths from 4 to 6 inches. It fits 10+ thick wires—ideal for merging circuits in home theaters or industrial panels.

## Contact Us

For more information, pricing, or custom data center solutions, please contact us:

Website: <https://yoahorroenergia.es>

Email: [hello@yoahorroenergia.es](mailto:hello@yoahorroenergia.es)

Phone: +233 54 318 7269

Address: Plot 28, Spintex Road, Accra, Greater Accra, Ghana

This document is for informational purposes only. Specifications subject to change without notice.

