

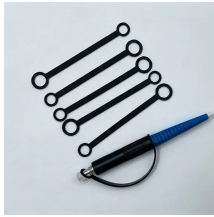
## Which electrical distribution box is on the balcony



## Which electrical distribution box is on the balcony



The receptacle must be located in an accessible location from the balcony, deck, or porch and not more than 2.0 m (6½ ft) above the balcony, deck, or porch walking ...



Complete specification guide for outdoor electrical distribution boxes covering NEC Article 312 requirements, NEMA ratings, sizing calculations, and selection criteria for commercial and ...



As a general recommendation, houses also should have a receptacle at each side of a deck or balcony, accessible from the ground. Receptacles in damp locations (under protective ...



When you gaze out at your front yard, you may notice a sturdy, grey metal box stationed near the edge of your property. These unassuming structures are known as padmounted transformers, and they ...



Balconies, decks, and porches that are attached to the dwelling unit and are accessible from inside the dwelling unit shall have at least one receptacle outlet accessible from the balcony, deck, or porch.



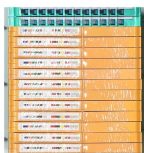
At least one receptacle outlet is required for any porch, deck, or balcony that is within 4-inches horizontally of a house, according to the 2020 edition of the National Electrical Code [NEC ...



The National Electrical Code specifies precise areas around a dwelling where exterior receptacles must be installed. For one-family and two-family homes, at least one 125-volt, 15- or 20 ...



The receptacle must be located in an accessible location from the balcony, deck, or porch and not more than 2.0 m (6½ ft) above the balcony, deck, or porch walking surface.



Discover the robust selection of secondary pedestals at Hubbell, designed to enhance and secure your power distribution needs. These secondary pedestals are built to withstand harsh environments, ...



A setback is the horizontal allowable distance that any building or structure, including balconies and overhangs, must maintain from an overhead power line. Everyone must comply with setback ...



All porches, balconies etc. should have one receptacle so long as they are attached or close enough (within 4") of the dwelling unit.

## Contact Us

For more information, pricing, or custom data center solutions, please contact us:

Website: <https://yoahorroenergia.es>

Email: [hello@yoahorroenergia.es](mailto:hello@yoahorroenergia.es)

Phone: +233 54 318 7269

Address: Plot 28, Spintex Road, Accra, Greater Accra, Ghana

This document is for informational purposes only. Specifications subject to change without notice.

