

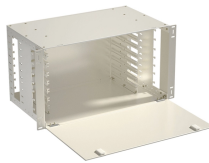
# **Wires in switch distribution boxes must not be laid**



## Wires in switch distribution boxes must not be laid



NEC ® Section 312.8 (A) is all about proper use of wiring space within enclosures for switches and overcurrent devices where splices, taps, and feed-through conductor installations may occur such as ...



One of the mistakes often made is over loading an wire electrical box with too many wires. This will cause switches and outlets to not fit correctly and could even cause wires to become damaged. This ...



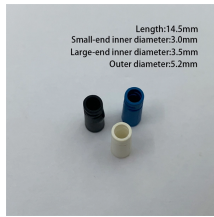
When used with a single gang box and where the cable is fastened within eight inches of a box measured along the sheath, the cable extends into the box so no less than one-fourth inch, so that ...



Runs of open conductors shall be located where the conductors will not be subject to physical damage, and the conductors shall be fastened at intervals not exceeding 10 feet (3.05 m). No branch-circuit ...



Runs of open conductors shall be located where the conductors will not be subject to physical damage, and the conductors shall be fastened at intervals not exceeding 10 feet (3.05 m). No branch-circuit ...



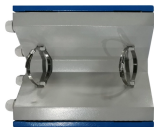
Electrical boxes must provide sufficient space for conductors and devices to prevent overheating and insulation damage. Overcrowding restricts heat dissipation and increases fire risk.



Runs of open conductors shall be located where the conductors will not be subject to physical damage, and the conductors shall be fastened at intervals not exceeding 10 feet (3.05 m). No branch-circuit ...



Conductors must enter enclosures through proper fittings to protect and secure the cables and wiring. This rule is critical to prevent physical damage and ensure safe operation.



Because most equipment could be worked on while energized (even if it's against policy), the working space must be provided. The code assumes a worst-case scenario to ensure safety.



Conductor terminal and splicing devices must be identified for the conductor material and they must be properly installed and used per the manufacturer's instructions [110.3 (B)].

## Contact Us

For more information, pricing, or custom data center solutions, please contact us:

Website: <https://yoahorroenergia.es>

Email: [hello@yoahorroenergia.es](mailto:hello@yoahorroenergia.es)

Phone: +233 54 318 7269

Address: Plot 28, Spintex Road, Accra, Greater Accra, Ghana

This document is for informational purposes only. Specifications subject to change without notice.

