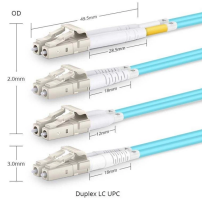


# Workshop Primary Distribution Box Configuration Standard



## Workshop Primary Distribution Box Configuration Standard



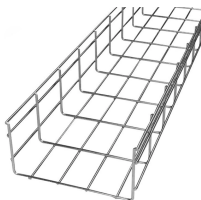
The customer shall provide a detailed design layout of primary vaults or outdoor kiosks, showing crew access and emergency escape routes, minimum operating clearances, safety grounding, proposed ...



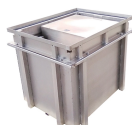
An example of an extremely dependable system arrangement is given in Primary Ring Bus, Primary Source Selective, Secondary Selective System is a re-arrangement of the primary ring-bus ...



The delta is arranged differently from the delta-wye connection, to satisfy the requirement from IEEE Standard Terminal Markings and Connections for Distribution and Power Transformers4 ...



Electrical Distribution Fundamentals Design Guide - Data Bulletin This guide is intended to present the fundamentals of power system design for commercial and industrial power systems.



Double-ended switchgear/building service transformers, in a “main-tie-main” configuration, and connected to the primary distribution system in a “loop-fed” primary configuration.



SRP is here to support you. Here, you'll find all commercial specifications guidelines and handbooks available for download.



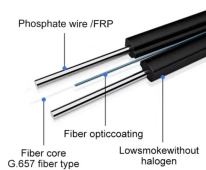
Learn how to install a distribution box safely and correctly. Covers wiring, placement, standards, and expert tips for a compliant setup.



Primary meter compartment to house DTE Electric revenue instrument transformers. These facilities on the customer's premises, including all associated DTE and customer owned equipment and parts ...



This document outlines the design and functionality of electrical distribution panels, detailing their types, key features, and operational mechanisms. It emphasizes ...



A primary distribution substation is the connection point of a distribution system to a transmission or a sub-transmission network. Outgoing feeders from a primary distribution substation are typically ...



Introduction My other Course E208, "Electric Power Distribution for Industrial Plants", is a low voltage system (under 600 volts) suitable for small and medium sized industrial plants with relatively light ...



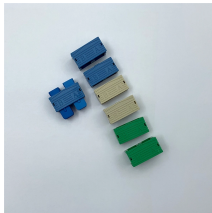
Looped-primary equipment at each building shall typically consist of non-fused loop switch cubicles, fused transformer primary disconnect switches, dry-type or liquid-filled transformers, secondary ...



The project consists of the installation of the complete underground duct system for both primary and secondary voltages, including conduit, pull boxes, sectors ground sleeves, equipment pads, riser ...



Provides construction standards and specifications for materials used in underground distribution networks.



COMPATIBLE UNITS FOR REINFORCING DISTRIBUTION WOOD POLES FOR POLES LARGER THAN APPEARING ON THIS TABLE SEE TRANSMISSION WOOD POLE REINFORCING ...

## Contact Us

For more information, pricing, or custom data center solutions, please contact us:

Website: <https://yoahorroenergia.es>

Email: [hello@yoahorroenergia.es](mailto:hello@yoahorroenergia.es)

Phone: +233 54 318 7269

Address: Plot 28, Spintex Road, Accra, Greater Accra, Ghana

This document is for informational purposes only. Specifications subject to change without notice.

