

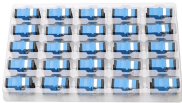
# **XL-21 Distribution Box Dimensions and Specifications**



## XL-21 Distribution Box Dimensions and Specifications



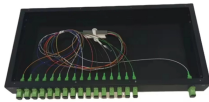
Explore free spreadsheet software tools with advanced features in Excel.



XL-21 type low-voltage power distribution cabinet (box) has the characteristics of flexible distribution scheme, convenient combination, strong practicability and novel structure.



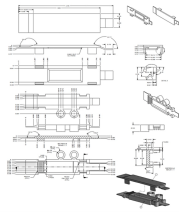
The XL-21 low voltage power distribution cabinet is suitable for three-phase four-wire systems with AC voltages up to 500V. It is primarily used for power distribution purposes in power plants, industrial ...



The main distribution box adopts self-design of new components, compact structure, beautiful appearance, easy maintenance, a variety of wiring options for users to choose, it is an ideal ...



XL stands for “Extra Large” in clothing sizes. It typically indicates a larger-than-average fit, ideal for individuals who may require more room in their shirts.



Most of our items don't have an XL, they just jump to 1XL. In the flowy tops and dresses, the difference between an XL and a 1XL is minimal, so they will generally pick one or the other.



XL Low Voltage Power Distribution Cabinet suitable for three-phase four-wire systems with AC voltages up to 500V. It is primarily used for power distribution purposes in power plants, indu



IXL is the world's most popular subscription-based learning site for K-12. Used by over 18 million students, IXL provides personalized learning in more than 17,000 topics, covering math, language ...



Below are the typical dimensions for a standard configuration. This is an example of a single-line diagram (SLD) for an XL-21 power distribution application. We build ...



Below are the typical dimensions for a standard configuration. This is an example of a single-line diagram (SLD) for an XL-21 power distribution application. We build each cabinet to your project's ...



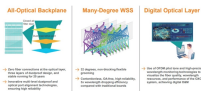
XL-21 power distribution box is divided into two types. The box height of 1700mm and 1800mm is ordinary type (P type).



When you encounter an item labeled XL (Extra Large), it generally signifies a specific position within the broader apparel sizing guides. At its most basic level, an XL garment is designed ...



You can customize the cabinet's dimensions: width (400-1000mm), height (1600-2200mm), and depth (400-800mm). The cabinet uses high-quality electrolytic steel or galvanized steel with a thickness of ...



What does the abbreviation XL stand for? Meaning: extra large.



XL-21 AC low voltage power distribution cabinet is an enclosed box-type structure made of bent steel plate. The knife switch operation handle is installed on the upper right column of the box front, which ...



This comprehensive guide delves into the specifications and standards of the XL-21 power distribution cabinet, providing valuable insights for engineers, facility managers, and electrical ...



Essentially, "XL" stands for "Extra Large," a sizing category that sits between large (L) and double-large (2X) in many clothing stores, sports brands, and furniture retailers.



Clothing labeled S, M, L, or XL might seem universal — but these sizes vary by country, brand, and even gender. This guide breaks down what each size typically means for chest, waist, and hips, and ...



In addition to the regular stock sizes of the power distribution cabinet, the width (400~1000mm), height (1600~2200mm), and depth (400~800mm) can be adjusted arbitrarily according to actual needs.

## Contact Us

For more information, pricing, or custom data center solutions, please contact us:

Website: <https://yoahorroenergia.es>

Email: [hello@yoahorroenergia.es](mailto:hello@yoahorroenergia.es)

Phone: +233 54 318 7269

Address: Plot 28, Spintex Road, Accra, Greater Accra, Ghana

This document is for informational purposes only. Specifications subject to change without notice.

